

FEATURES

For high-precision measurements

- High-contrast dial face, sealed with O-ring
- Mineral glass viewing panel for best protection:
 - against cracking, scratching or damage caused by hot shavings
 - optimum resistance to solvents
- Matt chrome-plated protective casing with three integrated dovetail guide rails
- Shockproof measuring mechanism
- Anti-magnetic model
- Automatic adjustment to the contacting direction ensuring infallible readings
- Ball bearing mounted double lever
- Friction clutch overload protection
- **Package contains:** case, instruction manual, spanner for changing the styli, stylus dia. \varnothing 2 mm, mounting shaft 800a8



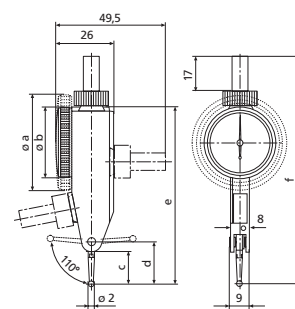
Application:

- Measurement of concentricity, alignment, parallelism and flatness
- Centering of bores and shafts
- Parallel or perpendicular alignment of work pieces

TECHNICAL DATA

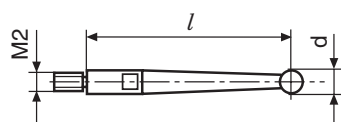
Order no.		4308150	4308200	4308205	4308250
Product type		800 SM	800 SGM	800 SGM-R	800 SRM
Measuring range	mm	± 0.1			± 0.2
Graduation value	mm	0.002			
Measuring surface		carbide		ruby	carbide
Scale diameter	mm	28	38		
Type of dial face		100–0–100			
Dial color		Yellow			
Measuring force	N	0.15			
Range per rev.	mm	0.2			
Deviation range f_e	μm	3			
Total deviation range f_{ges}	μm	4			5
Hysteresis f_u	μm	2			3
Partial measuring span f_t	μm	2			
Repeatability f_w	μm	1.5			
Standard		DIN 2270			Factory standard

Order no.	a	b	c	d	e	f	Measuring anvil length
	mm	mm	mm	mm	mm	mm	mm
4308150		30	13.6	17.8	75	99	14.5
4308200	40.5		13.6	17.8	75	99	14.5
4308205	40.5		13.6	17.8	75	99	14.5
4308250	40.5		13.6	17.8	75	99	14.5



ACCESSORIES

Order no.	Product name	Product type
4305870	Stylus \varnothing 1.0 mm, carbide, l = 14.5 mm	800 ts
4305850	Stylus \varnothing 2.0 mm, carbide, l = 14.5 mm	800 ts
4305871	Stylus \varnothing 3.0 mm, carbide, l = 14.5 mm	800 ts
4309051	Stylus \varnothing 2.0 mm, ruby, l = 14.5 mm	800 tsr
4305868	Spanner	



800 tb;800 tbr;800 te;800 ter;800 tl;800 tlr;800 ts;800 tsr;801 tl