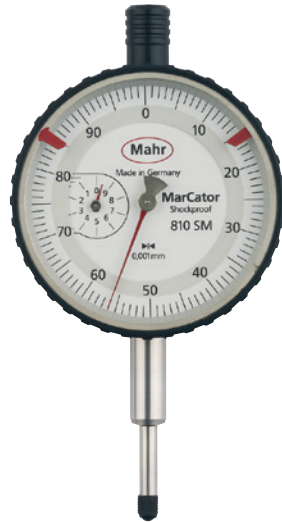


MarCator 810 SM / 810 SRM

Dial Indicator

FEATURES

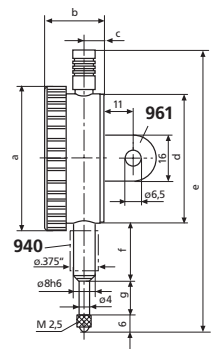
- High contrast dial face
- Adjustable tolerance markers
- Chrome plated housing
- Lifter protection cap on the measuring spindle
- Precise mechanism with a combined gear lever transmission
- High accuracy with a minimum span of error
- Package contains: case



TECHNICAL DATA

Order no.	4311070		4311080	
Product type	810 SM		810 SRM	
Measuring span	mm	1	5	
Graduation value	mm	0.001		
Type of dial face	0–100		0–100–0	
Range per rev.	mm	0.1	0.2	
Error limit, measuring range	µm	4	10	
Error limit, 1 revolution	µm	3	5	
Error limit, 1/2 revolution	µm	2	3	
Error limit, 1/10 revolution	µm	1	2	
Repeatability f_w	µm	1.5	3	
Hysteresis f_u	µm	1.5	3	
Overtravel	mm	4	0.1	
Measuring force incoming measuring pin	1.3–1.8		1.2–1.7	
Standard	Factory standard			
Shockproof movement	•			
Lifting protection cap	•			

Order no.	a	b	c	d	e	f	g	Mounting shaft	Scale diameter
	mm	mm	mm	mm	mm	mm	mm	mm	mm
4311070	58	23	8.5	52	111.5	22	15	8	50
4311080	58	23	7.5	52	111.5	22	15	8	50



ACCESSORIES

Order no.	Product name	Product type
4310103	Adapter bush (.375" / 8 mm)	940
4373020	Splash proof cap (58 mm)	955
4375010	Lug back, vertical, for 810	961
4375011	Lug back, horizontal, for 810	962