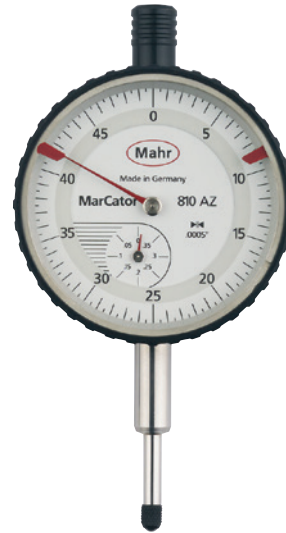


MarCator 810 AZ / 803 AZ

Dial Indicator

FEATURES

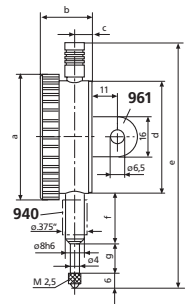
- High contrast dial face
- Adjustable tolerance markers
- Chrome plated housing
- Lifter protection cap on the measuring spindle
- Precision gears and pinions
- **Package contains:** adapter bush 940, 8 mm to 3/8", case



TECHNICAL DATA

Order no.	4311900		4324900	
Product type	810 AZ		803 AZ	
Measuring span	inch	.400"	.120"	
Graduation value	inch	.0005"		
Type of dial face	0–50		0 –20	
Range per rev.	inch	.05"	.02"	
Error limit	inch	.0005"	.0004"	
Error limit, 1/10 revolution inches (text)	inch	.0002"		
Repeatability f_w	inch	.00012"		
Hysteresis f_u	inch	.00012"		
Free stroke inches (text)	inch	.004"	.008"	
Measuring force incoming measuring pin	0.9 –1.5		0.7 –1.1	
Standard	Factory standard			
Lifting protection cap	•			
Dial color	White			

Order no.	a	b	c	d	e	f	g	Mounting shaft	Mounting shaft	Scale diameter
	mm	mm	mm	mm	mm	mm	mm	mm	inch	inch
4311900	58	23	7.5	52	111.5	22	15	8	.375"	1.97"
4324900	40	20.6	6.8	37	83	15.5	8	8	.375"	1.4"



ACCESSORIES

Order no.	Product name	Product type
4310103	Adapter bush (.375" / 8 mm)	940
4373020	Splash proof cap (58 mm)	955
4375010	Lug back, vertical, for 810	961
4375011	Lug back, horizontal, for 810	962
4375020	Lug back, vertical, for 803	966
4375021	Lug back, horizontal, for 803	967