

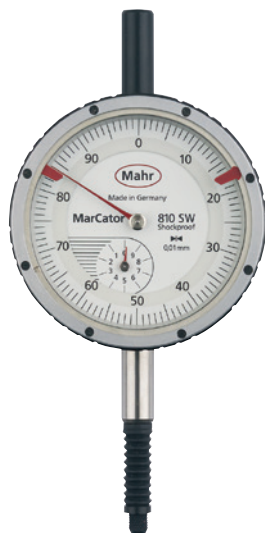
MarCator 810 SW / 803 SW

Water- and dust-resistant Dial Indicator



FEATURES

- High contrast dial face
- Adjustable tolerance markers
- Chrome plated housing
- Precision gears and pinions
- Hermetically sealed upper protective measuring spindle cap, bezel and transparent dial cover; sealed with O-rings
- Measuring spindle sealed with rubber sleeve, thus preventing contamination by liquids and impurities
- IP protection category: IP 54
- Package contains: case



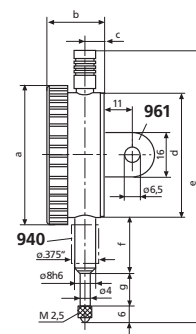
Application:

At the place of measurement where the dial indicator is exposed to extreme contamination or moisture

TECHNICAL DATA

Order no.	4315000		4326000	
Product type	810 SW		803 SW	
Measuring span	mm	10	3	
Graduation value	mm	0.01		
Type of dial face	0 – 100		0 – 50	
Range per rev.	mm	1	0.5	
Error limit, measuring range	µm	15	10	
Error limit, 1 revolution	µm	10	9	
Error limit, 1/2 revolution	µm	9	8	
Error limit, 1/10 revolution	µm	5		
Repeatability f_w	µm	3		
Hysteresis f_u	µm	3		
Overtravel	mm	0.1		
Measuring force incoming measuring pin	0.7 – 1.6		0.7 – 1.7	
Standard	DIN 878			
Shockproof movement	•			
Protective measuring spindle cap	•			
Dial color	White			

Order no.	a	b	c	d	e	f	g	Mounting shaft
	mm	mm	mm	mm	mm	mm	mm	mm
4315000	61	24.2	7.9	52	127.6	22	22.1	8
4326000	44	21.6	7.1	37	86	15	11	8



ACCESSORIES

Order no.	Product name	Product type
4310103	Adapter bush (.375" / 8 mm)	940
4375010	Lug back, vertical, for 810	961
4375011	Lug back, horizontal, for 810	962
4375020	Lug back, vertical, for 803	966
4375021	Lug back, horizontal, for 803	967