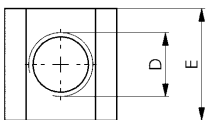
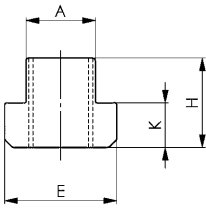


DIN 508

Nuts for T-slots (T-nuts)

tempered, grade 10.



| Order no. | D x Slot | Test force [kN] | A | E | H | K | Packaging Unit | Weight [g] |
|-----------|----------|-----------------|------|----|----|----|----------------|------------|
| 80002 | M 5x 6 | 11,4 | 5,7 | 10 | 8 | 4 | 50 | 4 |
| 80010 | M 6x 8 | 16,0 | 7,7 | 13 | 10 | 6 | 100 | 9 |
| 80028 | M 8x10 | 29,0 | 9,7 | 15 | 12 | 6 | 100 | 12 |
| 140301 | M 8x12* | 29,0 | 11,7 | 18 | 14 | 7 | 50 | 22 |
| 140327 | M 8x14* | 29,0 | 13,7 | 22 | 16 | 8 | 50 | 41 |
| 153460 | M 8x16* | 29,0 | 15,7 | 25 | 18 | 9 | 25 | 50 |
| 153478 | M 8x18* | 29,0 | 17,7 | 28 | 20 | 10 | 25 | 91 |
| 80036 | M10x12 | 46,0 | 11,7 | 18 | 14 | 7 | 50 | 22 |
| 80234 | M10x14* | 46,0 | 13,7 | 22 | 16 | 8 | 50 | 37 |
| 80366 | M10x16* | 46,0 | 15,7 | 25 | 18 | 9 | 25 | 60 |
| 81265 | M10x18* | 46,0 | 17,7 | 28 | 20 | 10 | 25 | 87 |
| 80044 | M12x14 | 67,0 | 13,7 | 22 | 16 | 8 | 50 | 35 |
| 80168 | M12x16* | 67,0 | 15,7 | 25 | 18 | 9 | 25 | 50 |
| 158907 | M12x18* | 67,0 | 17,7 | 28 | 20 | 10 | 25 | 82 |
| 80051 | M14x16* | - | 15,7 | 25 | 18 | 9 | 25 | 50 |
| 80176 | M14x18* | - | 17,7 | 28 | 20 | 10 | 25 | 70 |
| 80069 | M16x18 | 128,0 | 17,7 | 28 | 20 | 10 | 50 | 70 |
| 80184 | M16x20* | 128,0 | 19,7 | 32 | 24 | 12 | 25 | 110 |
| 155630 | M16x22* | 128,0 | 21,7 | 35 | 28 | 14 | 25 | 176 |
| 159418 | M16x24* | 128,0 | 23,7 | 40 | 32 | 16 | 10 | 260 |
| 159426 | M16x28* | 128,0 | 27,7 | 44 | 36 | 18 | - | 383 |
| 80077 | M18x20* | - | 19,7 | 32 | 24 | 12 | 25 | 110 |
| 80242 | M18x22* | - | 21,7 | 35 | 28 | 14 | 10 | 163 |
| 80085 | M20x22 | 196,0 | 21,7 | 35 | 28 | 14 | 25 | 155 |
| 80192 | M20x24* | 196,0 | 23,7 | 40 | 32 | 16 | 10 | 235 |
| 158899 | M20x28* | 196,0 | 27,7 | 44 | 36 | 18 | - | 355 |
| 80093 | M22x24* | - | 23,7 | 40 | 32 | 16 | 10 | 220 |
| 80358 | M22x28* | - | 27,7 | 44 | 36 | 18 | 10 | 340 |
| 80101 | M24x28 | 282,0 | 27,7 | 44 | 36 | 18 | - | 322 |
| 80200 | M24x30* | 282,0 | 29,7 | 48 | 38 | 19 | - | 440 |
| 80218 | M24x36* | 282,0 | 35,6 | 54 | 44 | 22 | - | 700 |
| 80119 | M27x32* | - | 31,6 | 50 | 40 | 20 | - | 460 |
| 80127 | M30x36 | 448,0 | 35,6 | 54 | 44 | 22 | - | 590 |
| 80226 | M30x42* | 448,0 | 41,6 | 65 | 52 | 26 | - | 1150 |
| 80135 | M36x42 | 653,0 | 41,6 | 65 | 52 | 26 | - | 1010 |
| 80143 | M42x48 | 653,0 | 47,6 | 75 | 60 | 30 | - | 1600 |
| 80150 | M48x54 | 653,0 | 53,6 | 85 | 70 | 34 | - | 2300 |

* Size not included in DIN, dimensions similar to DIN

Note:

The full load capacity can only be achieved if the screw connection is applied over the entire length „H“ of the thread.

For test force see DIN 508

On request:

Special makes on request.

Recommendations



DIN 6379,
page 92



DIN 6331,
page 100



DIN 6340,
page 105

CAD



Subject to technical alterations.