

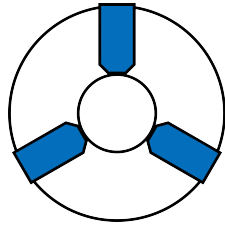
Jaw data sheet for:

Kitagawa

B-204

Slot width (D): 10 mm

Serration: 1,5x60°



	Part No.: KTN-B204	Slot width (D)	10mm	Height	15 mm
		Pitch (E)	14 mm	Weight	0,2 kg
		Thread	M8	Packing unit	3 piece per set
		Recess height (G)	5,5 mm	Price	On request

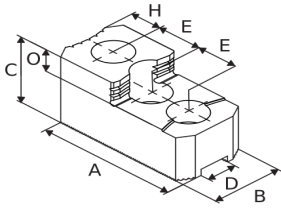
Jaws according to your selection:

Soft top jaws	Part No.	A	B	C	H	E	Material	Weight	Packing unit	Price
	KSJ-204-005	50	25	25	12	14	Steel	0,5 kg	3 piece per set	On request
	SJ05N1-038	54	23	38	12	14	Steel	0,9 kg	3 piece per set	On request
	SJ05N1-053	54	23	53	12	14	Steel	1,4 kg	3 piece per set	On request

Soft top jaws	Part No.	A	B	C	H	E	S	Angle	Material	Weight	Packing unit	Price
	KSJ-204H-50-P	52	24	50	12,5	14		120°	Steel	1,1 kg	3 piece per set	On request
	KSJ-204-P	52	22	24	12	14	4	120°	Steel	0,5 kg	3 piece per set	On request
	SJ05N1	54	23	25	12	14	5	120°	Steel	0,6 kg	3 piece per set	On request
	KSJ-205H-50-P	57	24	50	12	14	4	120°	Steel	1,3 kg	3 piece per set	On request
	KSJ-205-P	55	25	30	15	14	10	120°	Steel	0,8 kg	3 piece per set	On request

Soft top jaws	Part No.	A	B	C	Material	Weight	Packing unit	Price
	KSBM-10-55-25-50	55	25	50	Steel	0,5 kg	1 piece	On request

**Hard reversible jaws
step type**



Part No.	A	B	C	O	H	E	Material	Weight	Packing unit	Price
HB04N1	53	23	27,5	10		14	Steel	0,5 kg	3 piece per set	On request

All shown articles are suggestions only.

Please check the chucks manual if the jaws are within the technical limits.

If you should have any questions please contact us.

2.025v.0613

Fon: +44 1725 514010

Fax: +441725 514001

email: export@kitagawaeurope.com