

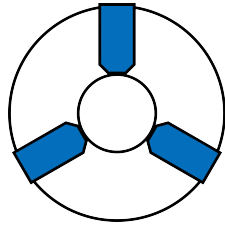
Jaw data sheet for:

Kitagawa

BR08

Slot width (D): 14 mm

Serration: 1,5x60°



	Part No.: KTN-B208	Slot width (D)	14mm	Height	20,5 mm
		Pitch (E)	25 mm	Weight	0,4 kg
		Thread	M12	Packing unit	3 piece per set
		Recess height (G)	8,5 mm	Price	On request

Jaws according to your selection:

Bar gripper	Part No.	B	C	E	P	R	Min. grip Ø	Max. grip Ø	Swing-Ø	Weight	Packing unit	Price
	KGJ-08-0415	35	46	25	-	-	6	32	225	2,1kg	3 piece per set	On request
	KGJ-08-1535	35	46	25	-	-	18	46	225	2kg	3 piece per set	On request

The gripping diameter and swing diameter shows an estimated value only.

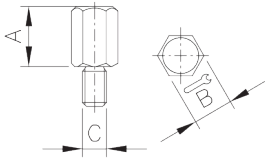
Hard top gripper jaws - Outer gripping	Part No.	B	C	E	P	R	Min. grip Ø	Max. grip Ø	Swing-Ø	Weight	Packing unit	Price
	KGJ-08-005	40	53	25	25	M6	146	182	241	2kg	3 piece per set	On request
	KGJ-08-006	40	53	25	25	M6	182	219	279	2,6kg	3 piece per set	On request
	KGJ-08-1215	40	53	25	25	M6	124	160	223	1,7kg	3 piece per set	On request
	KGJ-08-3060	35	53	25	25	M6	38	71	221	2kg	3 piece per set	On request
	KGJ-08-6090	35	53	25	25	M6	63	99	221	2kg	3 piece per set	On request
	KGJ-08-9012	40	53	25	25	M6	94	129	221	1,9kg	3 piece per set	On request

The gripping diameter and swing diameter shows an estimated value only.

Hard top gripper jaws - Inner gripping	Part No.	B	C	E	P	R	Min. grip Ø	Max. grip Ø	Swing-Ø	Weight	Packing unit	Price
	KGJ-08-001	35	53	25	20	M6	59	88	221	2kg	3 piece per set	On request
	KGJ-08-002	40	53	25	20	M6	82	118	222	2,3kg	3 piece per set	On request
	KGJ-08-003	40	53	25	20	M6	112	148	222	2,2kg	3 piece per set	On request
	KGJ-08-004	40	53	25	20	M6	142	178	232	2,2kg	3 piece per set	On request

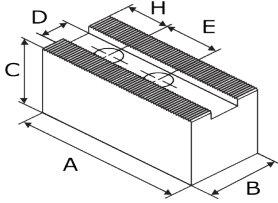
The gripping diameter and swing diameter shows an estimated value only.

Stop screws for gripper jaws



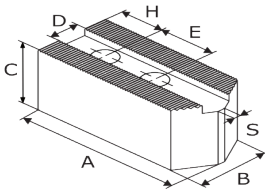
Part No.	A	B	C	Weight	Packing unit	Price
KWS-106	10	10	M6	0.10 kg	3 piece per set	On request
KWS-156	15	10	M6	0.10 kg	3 piece per set	On request
KWS-206	20	10	M6	0.20 kg	3 piece per set	On request
KWS-256	25	10	M6	0.20 kg	3 piece per set	On request
KWS-56	5	10	M6	0.10 kg	3 piece per set	On request

Soft top jaws



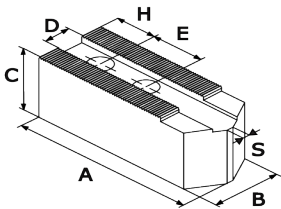
Part No.	A	B	C	H	E	Material	Weight	Packing unit	Price
KSJ-08H-60-F-A	90	40	60	20	25	Aluminum	1,4 kg	3 piece per set	On request
KSJ-08L-140-F	140	40	40	24	25	Steel	4,5 kg	3 piece per set	On request
KSJ-08-F	95	35	37	24	25	Steel	2,2 kg	3 piece per set	On request
KSJ-08H-100-F	95	35	100	24	25	Steel	6,4 kg	3 piece per set	On request
KSJ-08H-120-F	95	35	120	24	25	Steel	7,7 kg	3 piece per set	On request
KSJ-08H-60-F	95	35	60	39	25	Steel	3,8 kg	3 piece per set	On request
KSJ-08W-60x40-F	95	60	40	24	25	Steel	4,7 kg	3 piece per set	On request
KSJ-08W-80x40-F	95	80	40	24	25	Steel	6,5 kg	3 piece per set	On request
SJ08A1-056	95	35	56	24	25	Steel	3,8 kg	3 piece per set	On request
SJ08A1-076	95	35	76	24	25	Steel	3,8 kg	3 piece per set	On request

Soft top jaws

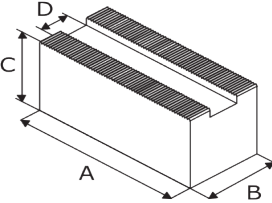


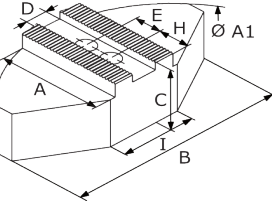
Part No.	A	B	C	H	E	S	Angle	Material	Weight	Packing unit	Price
KSJ-08L-120-P	120	40	40	24	25	14	120°	Steel	3,8 kg	3 piece per set	On request
KSJ-08H-50-P	95	35	50	24	25	14	120°	Steel	3,1 kg	3 piece per set	On request
KSJ-08H-60-P	95	35	60	24	25	14	120°	Steel	3,8 kg	3 piece per set	On request
KSJ-08H-80-P	95	35	79	24	25	6	120°	Steel	5 kg	3 piece per set	On request
KSJ-08-P	95	35	37	24	25	6,5	120°	Steel	2,2 kg	3 piece per set	On request
KSJ-08W-40x40-P	95	40	40	24	25	14	120°	Steel	2,9 kg	3 piece per set	On request
KSJ-08W-50x50-P	95	50	50	24	25	14	120°	Steel	4,8 kg	3 piece per set	On request
KSJ-08L Point	102	35	37	20	25	1	60°	Steel	2,4 kg	3 piece per set	On request
KSJ-08L-102-P	102	35	37	20	25	6	120°	Steel	2,4 kg	3 piece per set	On request

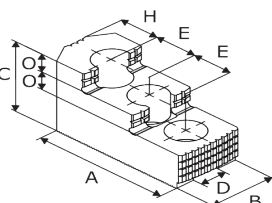
Soft top jaws

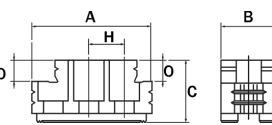


Part No.	A	B	C	H	E	S	Angle	Material	Weight	Packing unit	Price
SJ08B1	95	35	38	24	25	12	120°	Steel	2,2 kg	3 piece per set	On request
KSJ-08-005P	102	40	100	20	25	4	120°	Steel	8,2 kg	3 piece per set	On request

Soft top jaws		Part No.	A	B	C	Material	Weight	Packing unit	Price
	KSBM-14-95-40-60	95	40	60	Steel	1,7 kg	1 piece	On request	
	KSBM-14-102-40-100	102	40	100	Steel	3,1 kg	1 piece	On request	
	KSBM-14-102-40-80	102	40	80	Steel	2,5 kg	1 piece	On request	
	KSBM-14-420-35-60	420	35	60	Steel	6,6 kg	1 piece	On request	
	KSBM-14-420-40-80	420	40	80	Steel	10,2 kg	1 piece	On request	
	KSBM-14-420-60-60	420	60	60	Steel	11,5 kg	1 piece	On request	

Pie jaws		Part No.	A	B	C	Ø A1.	H	E	Material	Weight	Packing unit	Price
	KPJ-08	70	140	60	200	30	25	Steel	13,3 kg	3 piece per set	On request	
	KPJ-08-A	72,5	140	58	200	35	25	Aluminum	4,6 kg	3 piece per set	On request	

Hard reversible jaws step type		Part No.	A	B	C	O	H	E	Material	Weight	Packing unit	Price
	HB08A1	86	35	51	12		25	Steel	2,5 kg	3 piece per set	On request	

Hard reversible jaws step type		Part No.	A	B	C	O	H	E	Material	Weight	Packing unit	Price
	HB08B1	92	35	51	18		25	Steel	2,2 kg	3 piece per set	On request	

All shown articles are suggestions only.

2.025v.0613

Please check the chucks manual if the jaws are within the technical limits.

If you should have any questions please contact us.

Fon: +44 1725 514010

Fax: +441725 514001

email: export@kitagawaeurope.com

