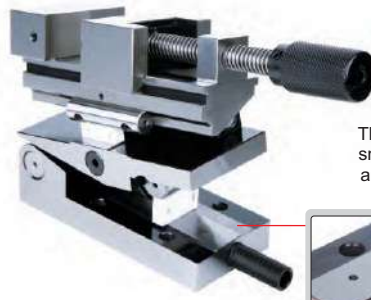
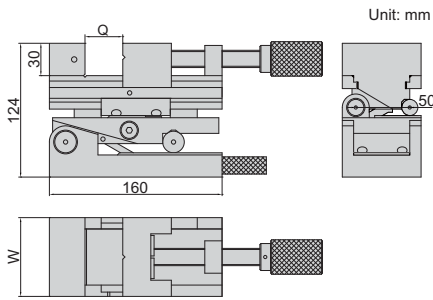


PRECISION COMPOUND SINE VISE



There is a 1mm step (accuracy $\pm 0.002\text{mm}$). Gage blocks smaller than 0.5mm are not available. If small gage blocks are needed (for example, 0.25mm), a gage block 1.25mm can be used in order to make $1.25\text{mm} - 1\text{mm} = 0.25\text{mm}$.



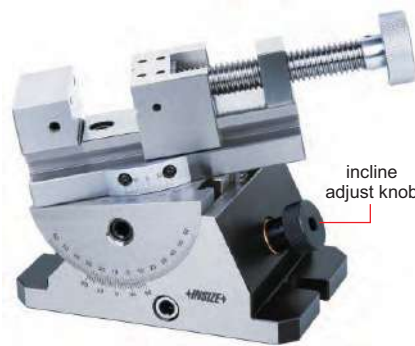
6524-80

- Parallelism: $3\mu\text{m}/100\text{mm}$
- Squareness: $5\mu\text{m}/100\text{mm}$
- Accuracy of angle: $\pm 15''$
- Made of SKS tool steel, subzero treatment
- Hardness HRC58-60

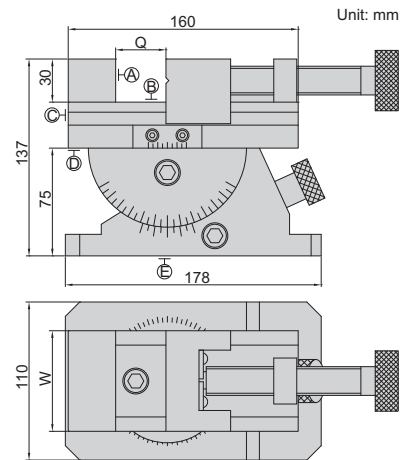
| Code | Jaw opening (Q) | Jaw width (W) | Adjustable angle |
|---------|-----------------|---------------|------------------|
| 6524-80 | 0-80mm | 73mm | 0-46° |

PRECISION UNIVERSAL VISE

- Horizontal rotary: range 360° , graduation 0.05°
- Vertical incline: range 45° , graduation 0.05°
- With incline adjust knob
- Parallelism and squareness between A, B, C and D: $5\mu\text{m}/100\text{mm}$, parallelism between D and E at 0° : $10\mu\text{m}/100\text{mm}$
- Made of tool steel
- Hardness HRC56-58

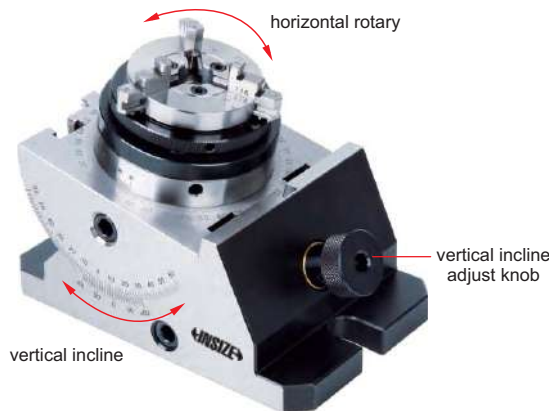


6521-80

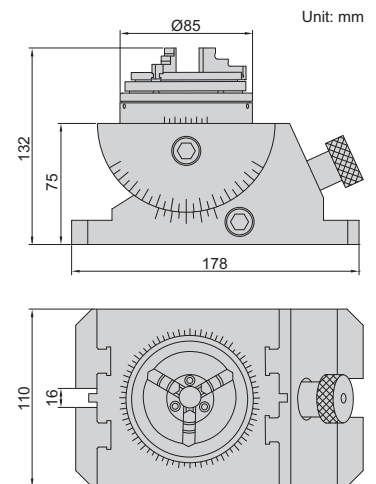


| Code | Jaw opening (Q) | Jaw width (W) |
|---------|-----------------|---------------|
| 6521-80 | 0-80mm | 70mm |

PRECISION UNIVERSAL VISE WITH CHUCK



6528-85



- Horizontal rotary: range 360° , graduation 0.05°
- Vertical incline: range 45° , graduation 0.05°
- With vertical incline adjust knob
- Runout of chuck is less than 0.05mm (test position is at less than 50mm from clamping jaws)
- The clamping jaws of chuck are reversible
- Made of tool steel
- Hardness HRC56-58

| Code | Range of external clamping | Range of internal clamping |
|---------|--|---|
| 6528-85 | $\varnothing 0.8 \sim \varnothing 63\text{mm}$ | $\varnothing 23 \sim \varnothing 58\text{mm}$ |