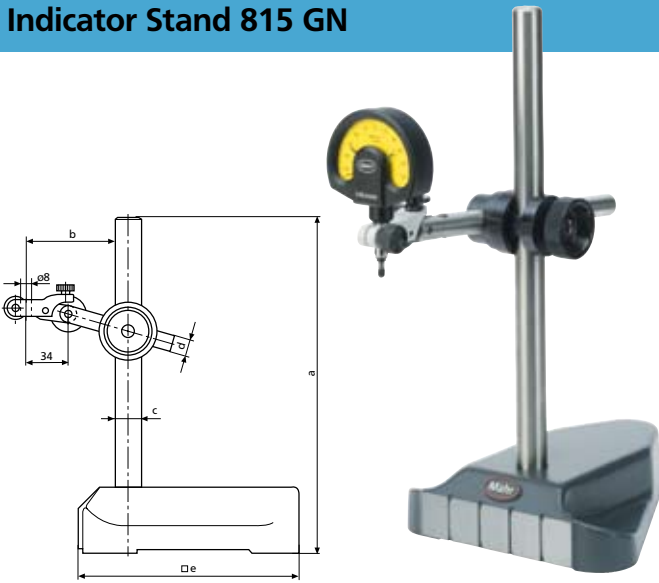


Indicator Stand 815 GN



Features

- Rugged base ensures both maximum stability and sturdiness
- The upper side of the base has a convenient hand grip
- Moves easily over surfaces without vibration
- Front of the base is ground to allow movement of the stand along edges and rules
- Stable due to the three point support
- Support arm can be fine adjusted
- Post and support arm are made from stainless steel
- Indicator can be rotated through $\pm 90^\circ$

Technical Data

Total height with base a mm / inch	Max. projection of support arm b mm	Post dia. c mm	d mm	Base surface e mm	Fine adjustment range mm	Weight kg	Order no.* Mount dia. 8H7	Order no.* Mount dia. 3/8 inch
300 / 12"	185	18	14	150 x 150	2	4.2	4413000	4413050
500 / 20"	200	25	18	190 x 180	2	9	4413001	4413051
750 / 30"	230	35	25	190 x 180	2	10	4413005	4413052

* excludes indicating instrument

Indicator Stand 2400



Features

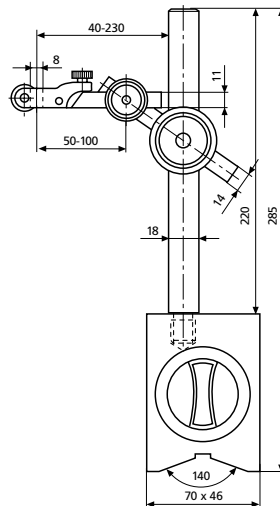
- A stable Height Stand for electronic measurement,
- Fine adjustment in the base allows easy operator set-up, even at high magnification. Up to 3.8 mm / .150" adjustment when arms fully extended.
- Collar has Teflon bearings and metal-to-metal clamping.
- Post is thermally isolated from heat transfer from the base.
- Arm lock is independent of the pivot lock.
- Uses vertical lug mounting
- EHE-2056 Lever gage head mounts directly to arm (as shown) EHE-2048 Lever gage head requires an EAM-1071 adaptor
- CP-83 Extra arm and swivel clamp assembly (allows mounting two lever gage heads on one stand)

Technical Data

Total height with base mm / inch	Arm reach mm / inch	Post dia. force mm / inch	Base surface mm / inch	Fine adjustment range mm / inch	Order no.*
530 / 20.8"	254 / 10"	38.1 / 1.25"	161.7 x 94 / 6.2 x 3.7"	3.8 / 1.5"	2400

* excludes indicating instrument

Indicator Stand 815 MA with magnetic base



Features

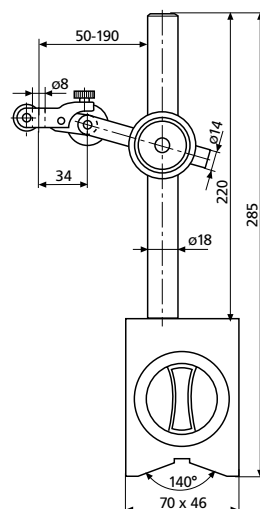
- Support arm with two joints
- Base has a powerful ON/OFF permanent magnet
- Magnetic force is active across the surfaces and the V-shaped bottom plus the front of the base
- Post and support arm are made from stainless steel
- Support arm can be fine adjusted

Technical Data

Total height with base mm / inch	V-way for shaft dia. mm	Magnetic force N	Fine adjustment range mm	Weight kg	Order no.* Mount dia. 8H7	Order no.* Mount dia. 3/8 inch	Order no. wooden case
285 / 11.2"	20 - 100	450	2	2.5	4416000	4416050	4416001

* excludes indicating instrument

Indicator Stand 815 MB with magnetic base



Features

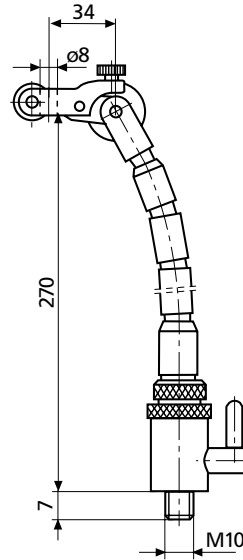
- Support arm with one joint
- Base has a powerful ON/OFF permanent magnet
- Magnetic force is active across the surfaces and the V-shaped bottom plus the front of the base
- Post and support arm are made from stainless steel
- Support arm can be fine adjusted
- Indicating instrument can be rotated through $\pm 90^\circ$

Technical Data

Total height with base mm / inch	V-way for shaft dia. mm	Magnetic force N	Fine adjustment range mm	Weight kg	Order no.* Mount dia. 8H7	Order no.* Mount dia. 3/8 inch	Order no. wooden case
285 / 11.2"	20 - 100	450	2	2.2	4417000	4417050	4416001

* excludes indicating instrument

Indicator Stand 815 MG with flexible stem



Features

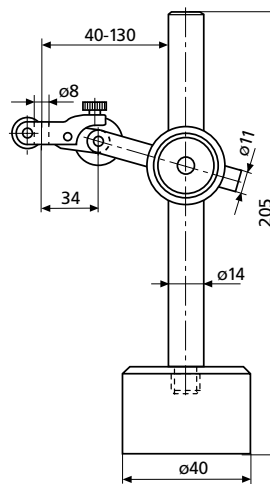
- Flexible in any direction, arm can be locked in position
- The sleeves and grounded steel balls of the stem are compressed with a strong steel cable
- Clamping force is adjustable
- Base has a powerful ON/OFF permanent magnet
- Magnetic force is active across the surfaces and the V-shaped bottom plus the front of the base
- Support arm can be fine adjusted
- Indicating instrument can be rotated through $\pm 90^\circ$

Technical Data

Total height with base mm / inch	V-way for shaft dia. mm	Magnetic force N	Fine adjustment range mm	Weight kg	Order no.* Mount dia. 8H7	Order no.* Mount dia. 3/8 inch	Order no. wooden case
350 / 14"	20 - 100	450	1.5	1.9	4420000	4420001	4416001

* excludes indicating instrument

Indicator Stand 815 P with magnetic base



Features

- Support arm has one joint
- Sturdy circular base with permanent magnet
- Post and support arm are made from stainless steel
- Support arm can be fine adjusted
- Indicating instrument can be rotated through $\pm 90^\circ$

Technical Data

Total height with base mm / inch	Magnetic force N	Fine adjustment range mm	Weight kg	Order no.* Mount dia. 8H7	Order no.* Mount dia. 3/8 inch
205 / 8"	250	1.5	0.7	4422000	4422050

* excludes indicating instrument

Post and Support Arm Assemblies 815 X

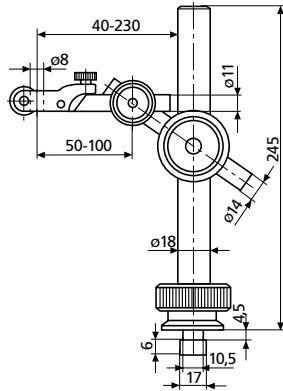
For application in inspection equipment for conducting length and concentricity (run-out) tests

815 XN

for mounting in a T-slot

- Two joints
- Knurled nut for clamping to the post
- Post and support arm are made from stainless steel
- With fine adjustment

Order no. 4424000

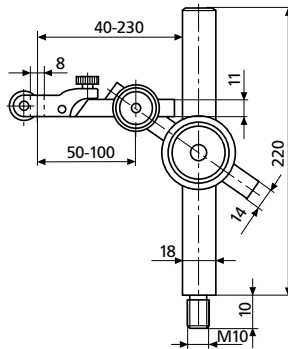


815 XMA

with mounting thread

- Two joints
- Post and support arm are made from stainless steel
- With fine adjustment

Order no. 4424005

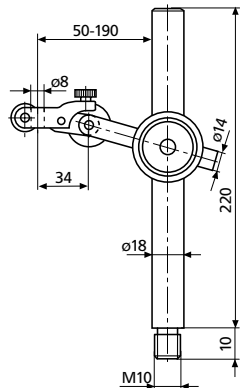


815 XMB

with mounting thread

- One joint
- Post and support arm are made from stainless steel
- With fine adjustment

Order no. 4424006



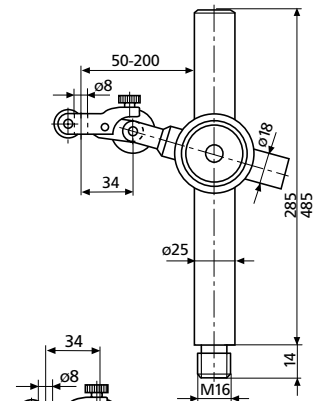
815 XMS

especially stable version with mounting thread

- One joint
- Post and support arm are made from stainless steel
- With fine adjustment

Post height Order no.

285 mm **4435011**
485 mm **4435015**

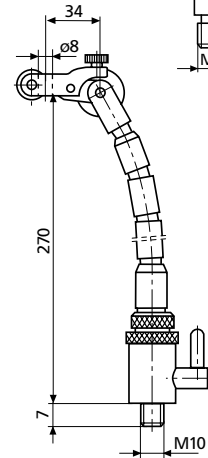


815 XMG

with mounting thread

- Flexible in any direction, arm can be locked in position
- With fine adjustment

Order no. 4424010

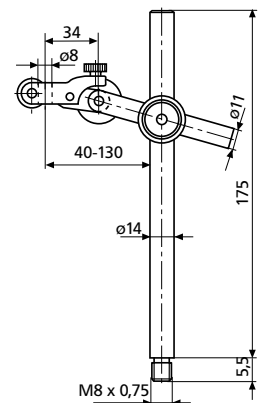


815 XP

with mounting thread

- One joint
- Post and support arm are made from stainless steel
- With fine adjustment

Order no. 4424015



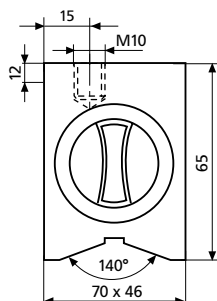
Magnetic Bases 815 Y

For the setting up of inspection equipment or as a base for adjusting devices on machine tools.

815 YM Standard Version

- Base has a powerful ON/OFF permanent magnet
- With threaded mounting hole
- V-groove in base
- Front is flat
- Magnetic force 450 N

Order no. 4425000



815 YP Round Version

- Permanent magnet plus threaded mounting hole
- Underside of the base is flat
- Magnetic force 250 N

Order no. 4425002

