



Series 10

36x36 Eh



Mobile cabinets

Made of high-quality sheet steel. Housing sides and bases are welded and painted with high resistance products, environmentally friendly. Available in different heights with uprights slotted in increments of 25 mm to allow drawers to be adjusted accordingly. Complete with safety upstand raised edges on 4 sides, rubber mat, handle and pair of castors (2 swivel braked and 2 fixed) in nylon or polyurethane. Equipped with central locking system, safety cylinder lock with 2 keys and single drawer opening system.

Width 802 mm, Depth 733 mm.

Width 802 mm, Depth 733 mm.

with nylon castors Ø 100 mm Part. No.	with polyurethane castors Ø 100 mm Part. No.	Total height mm	with polyurethane castors Ø 150 mm Part. No.	Total height mm	Usable height for drawers mm
10-39700	10-39710	857	10-39720	914	600
10-39800	10-39810	957	10-39820	1014	700
10-39850	10-39860	1007	10-39870	1064	750
10-39900	10-39910	1157	10-39920	1214	900

Max load capacity: 400 kg with load evenly distributed

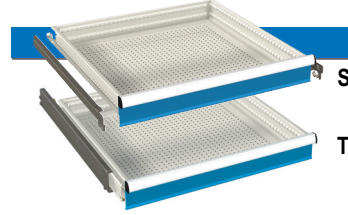
Colours: see colour chart at the bottom of the page



nylon castors
(2 fixed and
2 swivel braked)



polyurethane castors
(2 fixed and
2 swivel braked)



Drawers

Made of high-quality sheet steel.

Available in two versions (simple or total extension) with steel roller bearings. All 4 drawer walls are slotted, for custom sub-division using partitioning material. All drawer handles are equipped with aluminium profiles, end caps and labelling strips.

Front height mm	Usable height mm	Lateral height mm	Load capacity kg *	Single locking system on right Part. No.
50 S	36	33	60	10-33052
75 S	61	52	70	10-33077
75 T	54	52	70	10-33078
100 S	86	77	70	10-33102
100 T	79	77	70	10-33103
125 S	111	77	70	10-33127
125 T	104	77	70	10-33128
150 S	136	127	70	10-33152
150 T	129	127	70	10-33153
175 T	154	127	70	10-33178
200 S	186	177	70	10-33202
200 T	179	177	70	10-33203
250 T	229	177	70	10-33253
300 S	286	277	70	10-33302
300 T	279	277	70	10-33303
400 T	379	277	70	10-33403

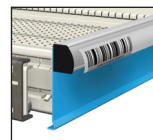
S = simple extension: 85 - 90% extension

T = total extension: 100% extension

* with load evenly distributed and at least one slotted divider in the middle

Colour: Light grey RAL 7035 internal,

for drawer front see colour chart at the bottom of the page



Card insert and cellophane (spare part)

For drawers: 36 Eh

Part. No. 06-00365

Kit: 30 pieces

Standard colours:

RAL 5012 RAL 6011 RAL 7035 RAL 9010



All drawers with single locking system on right



Load capacity is intended for evenly distributed loads

Standard examples:

Height: 914 mm



01 02
50 S 50 S
100 S 100 T
100 S 100 T
150 S 150 T
200 S 200 T



03 04
75 S 75 T
75 S 75 T
100 S 100 T
100 S 100 T
250 T 250 T



05 06
75 S 75 T
75 S 75 T
100 S 100 T
100 S 100 T
100 S 100 T
150 S 150 T

Height:	Part. No.
914 mm	10-39720-01
	10-39720-02

5 Drawers with single locking system on right
4-sided safety upstand with rubber mat

Height:	Part. No.
914 mm	10-39720-03
	10-39720-04

5 Drawers with single locking system on right
4-sided safety upstand with rubber mat

Height:	Part. No.
914 mm	10-39720-05
	10-39720-06

6 Drawers with single locking system on right
4-sided safety upstand with rubber mat

Height: 1014 mm



01 02
100 S 100 T
150 S 150 T
150 S 150 T
300 S 300 T



03 04
75 S 75 T
75 S 75 T
100 S 100 T
100 S 100 T
150 S 150 T
200 S 200 T



05 06
75 S 75 T
75 S 75 T
100 S 100 T
100 S 100 T
100 S 100 T
100 S 100 T
150 S 150 T

Height:	Part. No.
1014 mm	10-39820-01
	10-39820-02

4 Drawers with single locking system on right
4-sided safety upstand with rubber mat

Height:	Part. No.
1014 mm	10-39820-03
	10-39820-04

6 Drawers with single locking system on right
4-sided safety upstand with rubber mat

Height:	Part. No.
1014 mm	10-39820-05
	10-39820-06

7 Drawers with single locking system on right
4-sided safety upstand with rubber mat



Partitioning material
see page 43



Drawers:
S = load capacity:70 kg - extension 85-90%
T = load capacity:70 kg - extension 100%



Standard examples are equipped
with 2 fixed and 2 swivel braked
polyurethane castors, Ø 150 mm



Series 10

36x36 Eh

Standard examples:

Height: 1064 mm



01	02
50 S	50 S
75 S	75 T
75 S	75 T
100 S	100 T
100 S	100 T
150 S	150 T
200 S	200 T



03	04
75 S	75 T
75 S	75 T
100 S	100 T
100 S	100 T
125 S	125 T
125 S	125 T
150 S	150 T



05	06
75 S	75 T
75 S	75 T
75 S	75 T
75 S	75 T
100 S	100 T
100 S	100 T
100 S	100 T
150 S	150 T

Height:	Part. No.
1064 mm	10-39870-01
	10-39870-02

7 Drawers with single locking system on right
4-sided safety upstand with rubber mat

Height:	Part. No.
1064 mm	10-39870-03
	10-39870-04

7 Drawers with single locking system on right
4-sided safety upstand with rubber mat

Height:	Part. No.
1064 mm	10-39870-05
	10-39870-06

8 Drawers with single locking system on right
4-sided safety upstand with rubber mat

Height: 1214 mm



09	02
100 S	100 T
100 S	100 T
100 S	100 T
150 S	150 T
150 S	150 T
300 S	300 T



03	04
75 S	75 T
75 S	75 T
100 S	100 T
150 S	150 T
150 S	150 T
150 S	150 T
200 S	200 T



07	08
50 S	50 S
75 S	75 T
75 S	75 T
100 S	100 T
100 S	100 T
150 S	150 T
150 S	150 T
200 S	200 T

Height:	Part. No.
1214 mm	10-39920-09
	10-39920-02

6 Drawers with single locking system on right
4-sided safety upstand with rubber mat

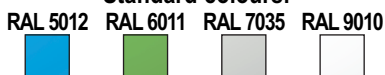
Height:	Part. No.
1214 mm	10-39920-03
	10-39920-04

7 Drawers with single locking system on right
4-sided safety upstand with rubber mat

Height:	Part. No.
1214 mm	10-39920-07
	10-39920-08

8 Drawers with single locking system on right
4-sided safety upstand with rubber mat

Standard colours:



Drawers:

S = load capacity: 70 kg - extension 85-90%
T = load capacity: 70 kg - extension 100%



Standard examples are equipped with 2 fixed and 2 swivel braked polyurethane castors, Ø 150 mm