

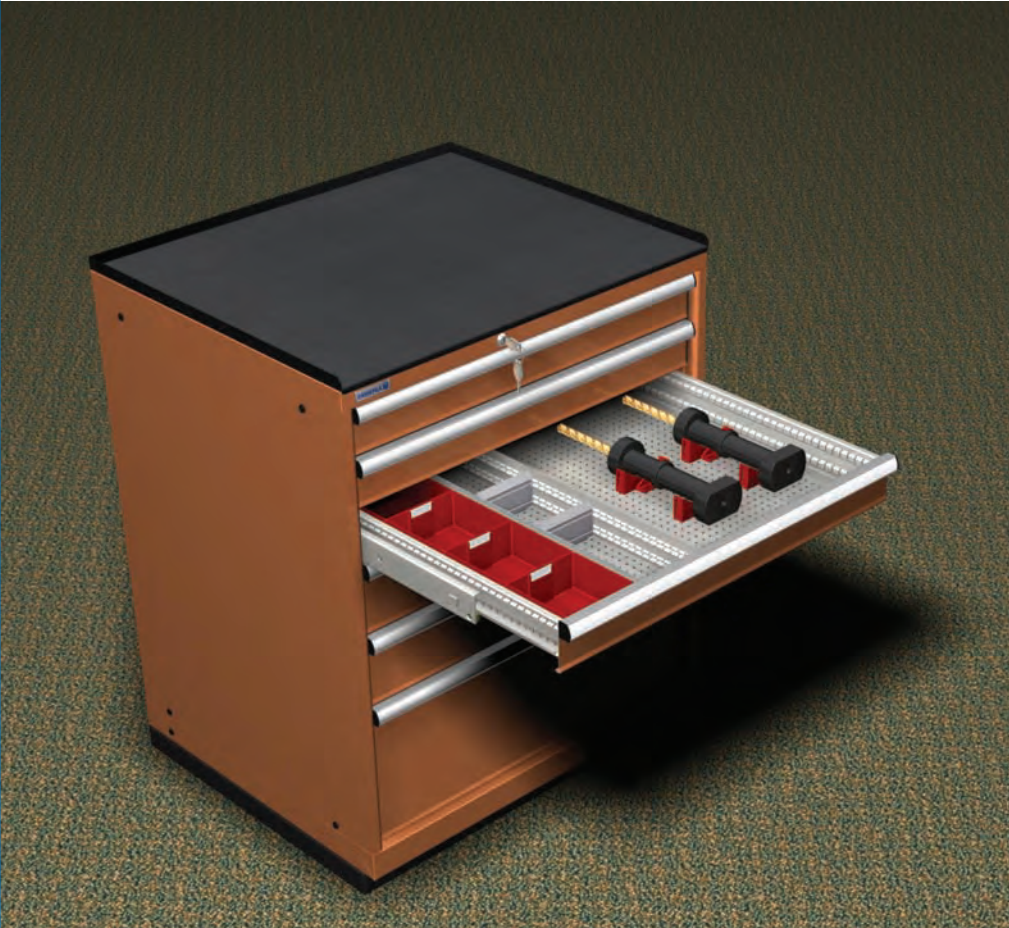


# Series 10

# 45x36 Eh

## Drawer cabinets

Width: 870 mm - Depth: 725 mm



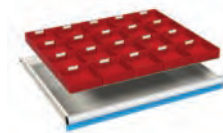
Drawer cabinets  
see page 47



Mobile drawer cabinets  
see page 52



Partitioning material  
see page 55



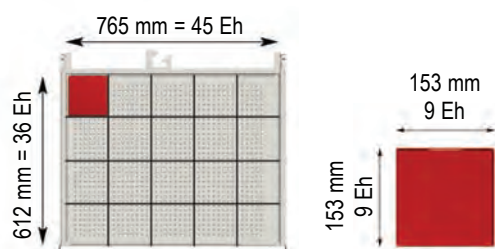
**Standard colours:**

RAL 5012	RAL 6011	RAL 7035	RAL 9010

5-year Guarantee

**For your safety all cabinets must be anchored using floor bolts**

Fixing material for cabinets  
Part. No. **06-00030**





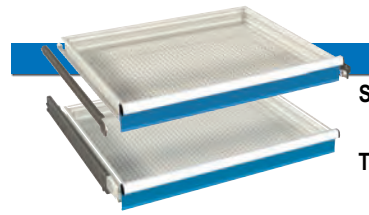
## Cabinets housings

Made of high-quality sheet steel. Housing sides and bases are welded and painted with high resistance products, environmentally friendly. Available in different heights with uprights slotted in increments of 25 mm to allow drawers to be adjusted accordingly.

Equipped with central locking system, safety cylinder lock with 2 keys and single drawer opening system.

Width mm	Depth mm	Height mm	Usable height mm	Part. No.
870	725	700	600	<b>10-40700</b>
870	725	850	750	<b>10-40850</b>
870	725	1000	900	<b>10-41000</b>
870	725	1450	1350	<b>10-41450</b>

Colours: see colour chart at the bottom of the page



## Drawers

Made of high-quality sheet steel.

Available in two versions (simple or total extension) with steel roller bearings. All 4 drawer walls are slotted, for custom sub-division using partitioning material. All drawer handles are equipped with aluminium profiles, end caps and labelling strips.

Front height mm	Usable height mm	Lateral height mm	Load capacity kg *	Part. No.
50 S	36	33	60	<b>10-43050</b>
75 S	61	52	80	<b>10-43075</b>
75 T	54	52	200	<b>10-43076</b>
100 S	86	77	100	<b>10-43100</b>
100 T	79	77	200	<b>10-43101</b>
125 S	111	77	100	<b>10-43125</b>
125 T	104	77	200	<b>10-43126</b>
150 S	136	127	100	<b>10-43150</b>
150 T	129	127	200	<b>10-43151</b>
200 S	186	177	100	<b>10-43200</b>
200 T	179	177	200	<b>10-43201</b>
250 T	229	177	200	<b>10-43251</b>
300 S	286	277	100	<b>10-43300</b>
300 T	279	277	200	<b>10-43301</b>

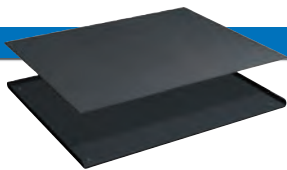
**S** = simple extension: 85 - 90% extension

**T** = total extension: 100% extension

\* with load evenly distributed and at least one slotted divider in the middle

Colour: Light grey RAL 7035 internal,

for drawer front see colour chart at the bottom of the page

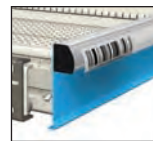


## Upstand raised edges on 3 sides

Made of high-quality steel

Width mm	Depth mm	Height mm	Upstand with mat Part. No.	Smooth rubber mat Part. No.
870	725	20	<b>10-40025</b>	-
865	720	2	-	<b>10-40022</b>

Colour: Black

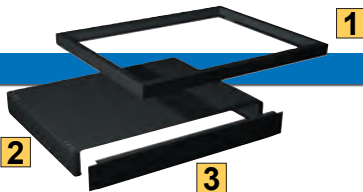


## Card insert and cellophane (spare part)

For drawers: 45 Eh

Part. No. **06-00455**

Kit: 30 pieces



## Cabinet bases

Made of high-quality steel

	Width mm	Depth mm	Height mm	Part. No.
<b>1</b> Base plinth	870	693	50	<b>05-44505</b>
<b>2</b> Pallet base	870	659	100	<b>05-14510</b>
<b>3</b> Cover plate	870	-	100	<b>05-34510</b>

Colour: Black



Partitioning material see page 55



Load capacity is intended for evenly distributed loads

## Standard colours:

RAL 5012	RAL 6011	RAL 7035	RAL 9010



# Series 10

# 45x36 Eh



## Cabinet housings

Made of high-quality sheet steel. Housing sides and bases are welded with high resistance products, environmentally friendly. Available in 2 different heights with uprights slotted in increments of 25 mm to allow shelves to be adjusted accordingly. Equipped with central locking system, safety cylinder lock with 2 keys and single drawer opening system.

Width mm	Depth mm	Height mm	Usable height mm	Part. No.
870	725	850	750	10-40860
870	725	1000	900	10-41010

Colours: see colour chart at the bottom of the page



## Perforated back panel

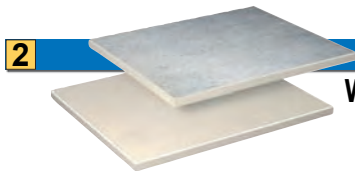
Made of high-quality steel

Width mm	Height mm	Usable height mm	Part. No.
870	1104	608	10-40100

Colour: Light grey RAL 7035



**Hooks**  
see page 249



## Work surfaces for cabinets

Width mm	Depth mm	Thickness mm	Plastic laminated Part. No.	Linoplex Part. No.
870	750	30	10-40014	10-40016

Colour: Plastic laminated/linoplex Light grey

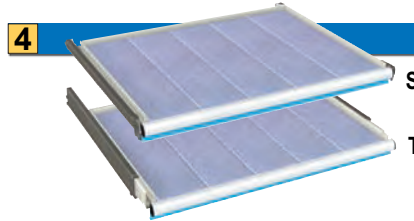


## Adjustable shelf

Made of steel. Lateral supports included

Usable width mm	Usable depth mm	Height mm	Load capacity kg	Part. No.
814	620	35	70	33-72048

Colour: Light grey RAL 7035



## Retractable shelves

Made of high-quality sheet steel. Available in two versions (simple or total extension) with steel roller bearings. Fitted with galvanised steel inserts ensuring a level surface. All retractable shelf handles are equipped with aluminium profiles, end caps and labelling strips.

Usable width mm	Usable depth mm	Height mm	Extension %	Load capacity kg *	Part. No.
765	612	75	85	100	10-43984
765	612	75	100	200	10-43985

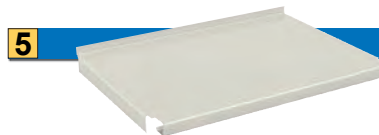
\* with load evenly distributed

Colours: see colour chart at the bottom of the page



## Card insert and cellophane (spare part)

For drawers: 45 Eh Part. No. 06-00455  
Kit: 30 pieces



## Lower shelf

Made of high-quality steel

Usable width mm	Usable depth mm	Height mm	Load capacity kg	Part. No.
804	618	55	50	10-40034

Colour: Light grey RAL 7035

### Standard colours:

RAL 5012 RAL 6011 RAL 7035 RAL 9010





Standard examples:

## Height: 700 mm



**03 02**  
50 S 50 S  
100 S 100 T  
100 S 100 T  
150 S 150 T  
200 S 200 T



**05 06**  
75 S 75 T  
75 S 75 T  
100 S 100 T  
100 S 100 T  
250 T 250 T



**09 08**  
75 S 75 T  
75 S 75 T  
100 S 100 T  
100 S 100 T  
100 S 100 T  
150 S 150 T

<b>Height:</b>	<b>Part. No.</b>
700 mm	10-40700-03
	10-40700-02
5 Drawers	

<b>Height:</b>	<b>Part. No.</b>
700 mm	10-40700-05
	10-40700-06
5 Drawers	

<b>Height:</b>	<b>Part. No.</b>
700 mm	10-40700-09
	10-40700-08
6 Drawers	

## Height: 850 mm



**03 02**  
50 S 50 S  
75 S 75 T  
75 S 75 T  
100 S 100 T  
100 S 100 T  
150 S 150 T  
200 S 200 T



**07 06**  
75 S 75 T  
75 S 75 T  
100 S 100 T  
100 S 100 T  
125 S 125 T  
125 S 125 T  
150 S 150 T



**11 10**  
75 S 75 T  
75 S 75 T  
75 S 75 T  
75 S 75 T  
100 S 100 T  
100 S 100 T  
100 S 100 T  
150 S 150 T

<b>Height:</b>	<b>Part. No.</b>
850 mm	10-40850-03
	10-40850-02
7 Drawers	

<b>Height:</b>	<b>Part. No.</b>
850 mm	10-40850-07
	10-40850-06
7 Drawers	





<b>Height:</b>	<b>Part. No.</b>
850 mm	10-40850-11
	10-40850-10
8 Drawers	



Partitioning material  
see page 55



**Drawers:**  
S = load capacity:100 kg - extension 85-90%  
T = load capacity:200 kg - extension 100%

**Standard colours:**  
RAL 5012  RAL 6011  RAL 7035  RAL 9010 



# Series 10

# 45x36 Eh

## Height: 1000 mm



<b>03</b>	<b>02</b>
100 S	100 T
100 S	100 T
100 S	100 T
150 S	150 T
150 S	150 T
300 S	300 T

<b>Height:</b>	<b>Part. No.</b>
1000 mm	10-41000-03
	10-41000-02
6 Drawers	



<b>07</b>	<b>06</b>
50 S	50 S
75 S	75 T
75 S	75 T
100 S	100 T
100 S	100 T
200 S	200 T
300 S	300 T

<b>Height:</b>	<b>Part. No.</b>
1000 mm	10-41000-07
	10-41000-06
7 Drawers	



<b>19</b>	<b>10</b>
75 S	75 T
75 S	75 T
100 S	100 T
150 S	150 T
150 S	150 T
150 S	150 T
200 S	200 T

<b>Height:</b>	<b>Part. No.</b>
1000 mm	10-41000-19
	10-41000-10
7 Drawers	



<b>13</b>	<b>14</b>
50 S	50 S
75 S	75 T
75 S	75 T
100 S	100 T
100 S	100 T
100 S	100 T
100 S	100 T
150 S	150 T
250 T	250 T

<b>Height:</b>	<b>Part. No.</b>
1000 mm	10-41000-13
	10-41000-14
8 Drawers	



<b>47</b>	<b>22</b>
50 S	50 S
75 S	75 T
75 S	75 T
100 S	100 T
100 S	100 T
100 S	100 T
150 S	150 T
150 S	150 T
200 S	200 T

<b>Height:</b>	<b>Part. No.</b>
1000 mm	10-41000-47
	10-41000-22
8 Drawers	



<b>45</b>	<b>46</b>
75 S	75 T
75 S	75 T
100 S	100 T
100 S	100 T
100 S	100 T
100 S	100 T
150 S	150 T
200 S	200 T

<b>Height:</b>	<b>Part. No.</b>
1000 mm	10-41000-45
	10-41000-46
8 Drawers	



<b>49</b>	<b>30</b>
50 S	50 S
50 S	50 S
75 S	75 T
75 S	75 T
100 S	100 T
100 S	100 T
100 S	100 T
150 S	150 T
200 S	200 T

<b>Height:</b>	<b>Part. No.</b>
1000 mm	10-41000-49
	10-41000-30
9 Drawers	



<b>33</b>	<b>34</b>
75 S	75 T
75 S	75 T
75 S	75 T
75 S	75 T
100 S	100 T
100 S	100 T
100 S	100 T
150 S	150 T
150 S	150 T

<b>Height:</b>	<b>Part. No.</b>
1000 mm	10-41000-33
	10-41000-34
9 Drawers	



<b>53</b>	<b>54</b>
100 S	100 T
100 S	100 T
100 S	100 T
100 S	100 T
100 S	100 T
100 S	100 T
100 S	100 T
100 S	100 T
100 S	100 T

<b>Height:</b>	<b>Part. No.</b>
1000 mm	10-41000-53
	10-41000-54
9 Drawers	

### Standard colours:

RAL 5012 RAL 6011 RAL 7035 RAL 9010

50



### Drawers:

S = load capacity:100 kg - extension 85-90%  
T = load capacity:200 kg - extension 100%

Standard examples:

## Height: 1000 mm



**43 42**  
 50 S 50 S  
 50 S 50 S  
 50 S 50 S  
 75 S 75 T  
 75 S 75 T  
 75 S 75 T  
 75 S 75 T  
 75 S 75 T  
 100 S 100 T  
 100 S 100 T  
 100 S 100 T  
 150 S 150 T



**27 28**  
 75 S 75 T  
 75 S 75 T  
 75 S 75 T  
 75 S 75 T  
 75 S 75 T  
 75 S 75 T  
 75 S 75 T  
 75 S 75 T  
 75 S 75 T  
 75 S 75 T  
 75 S 75 T  
 75 S 75 T  
 75 S 75 T  
 75 S 75 T  
 75 S 75 T

Height:	Part. No.
1000 mm	10-41000-43
	10-41000-42

11 Drawers

Height:	Part. No.
1000 mm	10-41000-27
	10-41000-28

12 Drawers

## Height: 1450 mm



**11 02**  
 100 S 100 T  
 100 S 100 T  
 100 S 100 T  
 150 S 150 T  
 150 S 150 T  
 150 S 150 T  
 150 S 150 T  
 150 S 150 T  
 150 S 150 T  
 150 S 150 T  
 300 S 300 T



**05 06**  
 150 S 150 T  
 150 S 150 T  
 150 S 150 T  
 150 S 150 T  
 150 S 150 T  
 150 S 150 T  
 150 S 150 T  
 150 S 150 T  
 150 S 150 T  
 150 S 150 T  
 150 S 150 T

Height:	Part. No.
1450 mm	10-41450-11
	10-41450-02

9 Drawers

Height:	Part. No.
1450 mm	10-41450-05
	10-41450-06

9 Drawers



**15 16**  
 75 S 75 T  
 75 S 75 T  
 100 S 100 T  
 100 S 100 T  
 100 S 100 T  
 100 S 100 T  
 150 S 150 T  
 150 S 150 T  
 200 S 200 T  
 200 S 200 T  
 200 S 200 T

Height:	Part. No.
1450 mm	10-41450-15
	10-41450-16

10 Drawers



**13 08**  
 75 S 75 T  
 75 S 75 T  
 75 S 75 T  
 75 S 75 T  
 100 S 100 T  
 100 S 100 T  
 100 S 100 T  
 100 S 100 T  
 100 S 100 T  
 100 S 100 T  
 100 S 100 T  
 100 S 100 T  
 150 S 150 T  
 150 S 150 T  
 150 S 150 T

Height:	Part. No.
1450 mm	10-41450-13
	10-41450-08

13 Drawers



Partitioning material  
 see page 55

Standard colours:

RAL 5012 RAL 6011 RAL 7035 RAL 9010





# Series 10

# 45x36 Eh



## Mobile cabinets

Made of high-quality sheet steel. Housing sides and bases are welded and painted with high resistance products, environmentally friendly. Available in different heights with uprights slotted in

increments of 25 mm to allow drawers to be adjusted accordingly. Complete with safety upstand raised edges on 4 sides, rubber mat, handle and pair of castors (2 swivel braked and 2 fixed) in nylon or rubber. Equipped with central locking system, safety cylinder lock with 2 keys and single drawer opening system.

Width 955 mm, Depth 733 mm.

with nylon castors Ø 100 mm Part. No.	with rubber castors Ø 100 mm Part. No.	Total height mm	with rubber castors Ø 150 mm Part. No.	Total height mm	Usable height for drawers mm
10-49700	10-49710	857	10-49720	914	600
10-49850	10-49860	1007	10-49870	1064	750
10-49900	10-49910	1157	10-49920	1214	900

Max load capacity: 400 kg with load evenly distributed

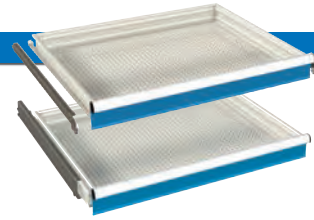
Colours: see colour chart at the bottom of the page



nylon castors  
(2 fixed and  
2 swivel braked)



rubber castors  
(2 fixed and  
2 swivel braked)



## Drawers

Made of high-quality sheet steel.

Available in two versions (simple or total extension) with steel roller bearings. All 4 drawer walls are slotted, for custom sub-division using partitioning material. All drawer handles are equipped with aluminium profiles, end caps and labelling strips.

Front height mm	Usable height mm	Lateral height mm	Load capacity kg *	Single locking system on right Part. No.
50 S	36	33	60	10-43052
75 S	61	52	70	10-43077
75 T	54	52	70	10-43078
100 S	86	77	70	10-43102
100 T	79	77	70	10-43103
125 S	111	77	70	10-43127
125 T	104	77	70	10-43128
150 S	136	127	70	10-43152
150 T	129	127	70	10-43153
200 S	186	177	70	10-43202
200 T	179	177	70	10-43203
250 T	229	177	70	10-43253
300 S	286	277	70	10-43302
300 T	279	277	70	10-43303

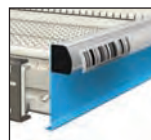
**S** = simple extension: 85 - 90% extension

**T** = total extension: 100% extension

\* with load evenly distributed and at least one slotted divider in the middle

Colour: Light grey RAL 7035 internal,

for drawer front see colour chart at the bottom of the page



### Card insert and cellophane (spare part)

For drawers: 45 Eh

Part. No. 06-00455

Kit: 30 pieces

### Standard colours:

RAL 5012 RAL 6011 RAL 7035 RAL 9010



All drawers with single locking system on right



Load capacity is intended for evenly distributed loads



Standard examples:

## Height: 914 mm



**09 02**  
50 S 50 S  
100 S 100 T  
100 S 100 T  
150 S 150 T  
200 S 200 T

Height:	Part. No.
914 mm	10-49720-09
	10-49720-02

5 Drawers with single locking system on right  
4-sided safety upstand with rubber mat



**05 06**  
75 S 75 T  
75 S 75 T  
100 S 100 T  
100 S 100 T  
250 T 250 T

Height:	Part. No.
914 mm	10-49720-05
	10-49720-06

5 Drawers with single locking system on right  
4-sided safety upstand with rubber mat



**11 08**  
75 S 75 T  
75 S 75 T  
100 S 100 T  
100 S 100 T  
100 S 100 T  
150 S 150 T

Height:	Part. No.
914 mm	10-49720-11
	10-49720-08

6 Drawers with single locking system on right  
4-sided safety upstand with rubber mat

## Height: 1064 mm



**11 02**  
50 S 50 S  
75 S 75 T  
75 S 75 T  
100 S 100 T  
100 S 100 T  
150 S 150 T  
200 S 200 T

Height:	Part. No.
1064 mm	10-49870-11
	10-49870-02

7 Drawers with single locking system on right  
4-sided safety upstand with rubber mat



**08 06**  
75 S 75 T  
75 S 75 T  
100 S 100 T  
100 S 100 T  
125 S 125 T  
125 S 125 T  
150 S 150 T

Height:	Part. No.
1064 mm	10-49870-08
	10-49870-06

7 Drawers with single locking system on right  
4-sided safety upstand with rubber mat



**13 10**  
75 S 75 T  
75 S 75 T  
75 S 75 T  
75 S 75 T  
100 S 100 T  
100 S 100 T  
100 S 100 T  
150 S 150 T

Height:	Part. No.
1064 mm	10-49870-13
	10-49870-10

8 Drawers with single locking system on right  
4-sided safety upstand with rubber mat



Partitioning material  
see page 55



**Drawers:**  
S = load capacity:70 kg - extension 85-90%  
T = load capacity:70 kg - extension 100%



Standard examples are equipped  
with 2 fixed and 2 swivel braked  
rubber castors, Ø 150 mm





# Series 10

# 45x36 Eh

Standard examples:

1 Height: 1214 mm



<b>03</b>	<b>02</b>
100 S	100 T
100 S	100 T
100 S	100 T
150 S	150 T
150 S	150 T
300 S	300 T



<b>19</b>	<b>10</b>
75 S	75 T
75 S	75 T
100 S	100 T
150 S	150 T
150 S	150 T
150 S	150 T
200 S	200 T



<b>23</b>	<b>18</b>
75 S	75 T
75 S	75 T
100 S	100 T
100 S	100 T
100 S	100 T
100 S	100 T
150 S	150 T
200 S	200 T

Height:	Part. No.
1214 mm	10-49920-03
	10-49920-02

6 Drawers with single locking system on right  
4-sided safety upstand with rubber mat

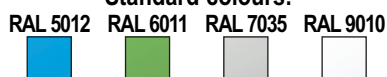
Height:	Part. No.
1214 mm	10-49920-19
	10-49920-10

7 Drawers with single locking system on right  
4-sided safety upstand with rubber mat

Height:	Part. No.
1214 mm	10-49920-23
	10-49920-18

8 Drawers with single locking system on right  
4-sided safety upstand with rubber mat

Standard colours:



Drawers:

S = load capacity:70 kg - extension 85-90%  
T = load capacity:70 kg - extension 100%



Standard examples are equipped with 2 fixed and 2 swivel braked rubber castors, Ø 150 mm