



BAH
TA.CP
TA
MO
HT
VH
TSI/TSX
T
MT-TC-TC3
Accessori
Accessories
Appendice tecnica
Technical supplement

teste multiple a giunti universali adjustable joint multispindle heads

Le teste multiple a giunti universali sono in produzione dal 1961; nel corso degli anni hanno subito modifiche e aggiornamenti, confermando però la validità dell'idea e lasciando inalterate le caratteristiche salienti:

- possibilità di utilizzo sia in foratura che in maschiatura
- possibilità di posizionamento nello spazio dei gruppi mandrino, vincolato soltanto dalle dimensioni dello stesso e dall'area di lavoro
- adattabilità a tutti i tipi di trapani o a soluzioni speciali
- vantaggiose soprattutto quando è necessario modificare di frequente gli interassi dei fori
- ampia gamma di modelli per le diverse esigenze

Sono disponibili a magazzino le seguenti versioni:

- serie T-TS a base circolare per l'esecuzione di massimo 12 fori; massima capacità di foratura diam. mm 22, interasse minimo mm 15 e massimo mm 350
- serie TL a base lineare per l'esecuzione di massimo 12 fori; massima capacità di foratura diam. mm 22, interasse minimo mm 17 e massimo mm 610
- serie TR a base rettangolare per l'esecuzione di massimo 16 fori; massima capacità di foratura diam. mm 22, interasse minimo mm 32 e massimo mm 395x345
- serie TM-TRM a base circolare e rettangolare per l'esecuzione di massimo 26 fori; grazie alle loro caratteristiche tecniche possono eseguire i più diversi schemi di foratura e maschiatura su macchine con potenza adeguata.

Il catalogo è congegnato per avere un preciso riscontro delle caratteristiche di tutte le teste a giunti universali e delle varie soluzioni possibili con esse; le nuove schede tecniche, gli esempi di attrezzature, gli accessori e le tabelle Vi guideranno nella scelta opportuna. Qualora il Vs. lavoro non sia eseguibile con questa serie di teste, il Ns. ufficio tecnico Vi fornirà la soluzione alternativa con la serie VH ad interassi variabili o con teste ad assi fissi appositamente disegnate e costruite.

The universal joint multispindle heads have been in production since 1961; over the years they have been modified and updated, without however refuting the goodness of the idea and always leaving major features unaltered:

- possibility of using for both drilling and tapping
- possibility of multi-positioning the spindle units, restricted only by the size of the spindle and of the working area
- suitable for all types of drills or for special solutions
- especially useful when the need arises to frequently change the hole centre distances
- broad range of models for different requirements

The following versions are in stock:

- series T-TS with round base for making up to 12 holes; max drilling capacity dia. 22 mm, minimum centre distance 15 mm, max centre distance 350 mm
- series TL with linear base for making up to 12 holes; max drilling capacity dia. 22 mm, minimum centre distance 17 mm, max centre distance 610 mm
- series TR with rectangular base for making up to 16 holes; max drilling capacity dia. 22 mm, minimum centre distance 32 mm, max centre distance 395x345 mm
- series TM-TRM with round and rectangular base for making up to 26 holes; thanks to their technical features, they are able to execute a series of different drilling and tapping patterns on machines of adequate power.

The catalogue is compiled so as to provide a precise reference for all the adjustable joint heads and the various possible solutions these offer. Thanks to the new technical sheets, equipment examples, accessories and charts, you will find making the right choice much easier.

In the event of this series of heads not providing the solution for your job, our technical department can provide alternative solutions with the variable centre distance VH series or fixed-axis heads, specially designed and made for you.

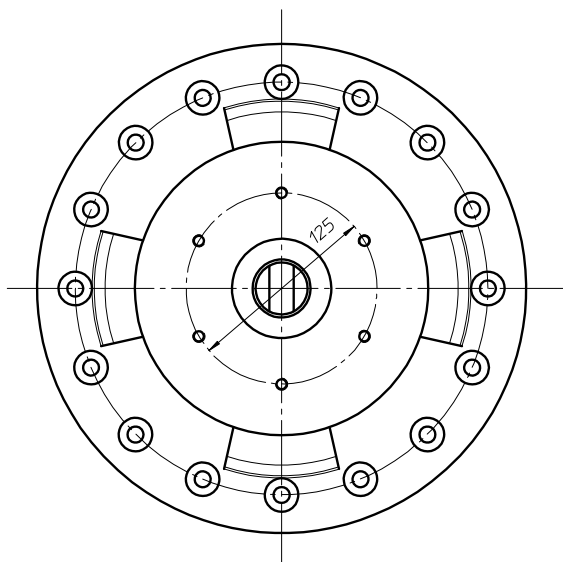
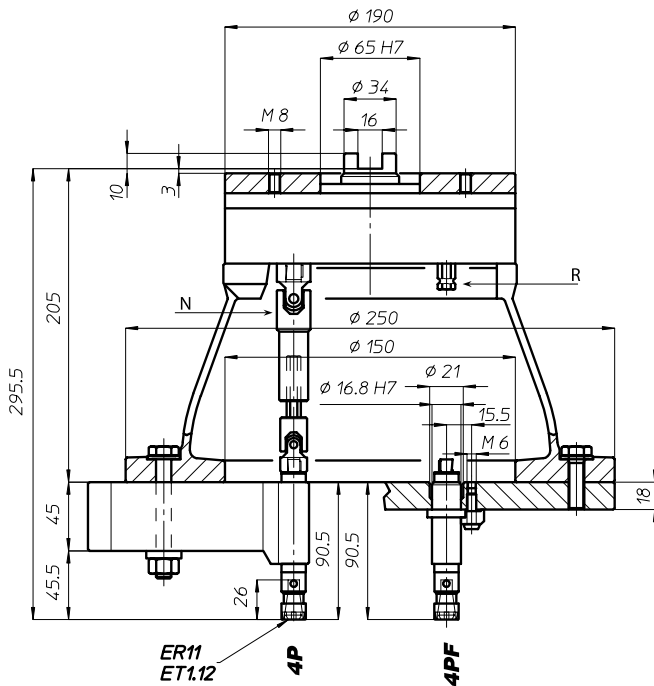
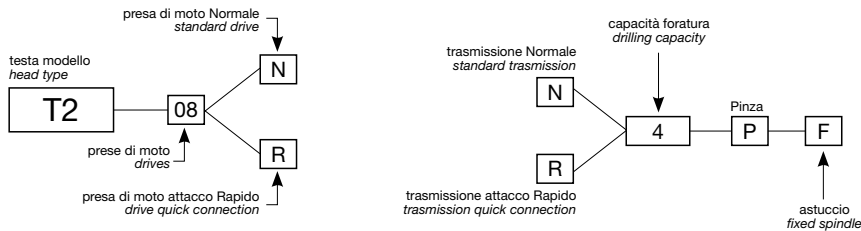
T2	8-2
T4	8-3
T7	8-4
T10	8-5
T12/TS12	8-6
T15/TS15	8-7
T18/TS18	8-8
T22/TS22	8-9
TL20/4	8-10
TL20/6	8-11
TL20/8	8-12
TL40/12	8-13
TL40/16	8-14
TL40/22	8-15
TL60/12	8-16
TL60/16	8-17
TL60/22	8-18
TR2/12	8-19
TR2/16	8-20
TR5/12	8-21
TR5/16	8-22
TR8/22	8-23
TM400	8-24
TM500	8-25
TRM43	8-26
TRM73	8-27
TRM43-2P	8-28
TRM73-2P	8-29
Mandrini per TM-TRM/TM-TRM spindles...	8-30
Attrezzature/Equipment	8-32
Manicotto di collegamento/Connection collar ..	8-34
Accessori/Accessories	10-1



T4

Codice testa
Head code

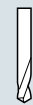
Codice mandrino
Spindle code



N° prese di moto
Nr. spindle drives: 08-12



Rapporto
Ratio: 1-1



Capacità di foratura
Drilling capacity:
acciaio R=500 N/mm²: 4
ghisa: GG25: 5



Maschiatura
Tapping: M4



Attacco utensile
Type of spindle:
P: ER11

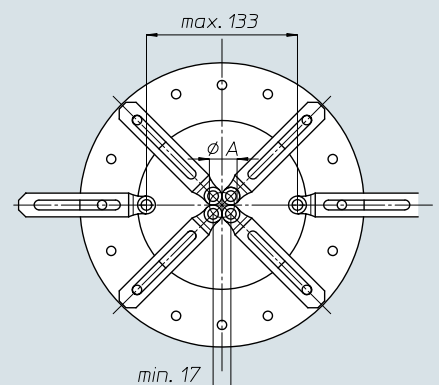


Peso gruppo testa
Head weight: Kg 9,5



Peso gruppo mandrino
Spindle-set weight: Kg 1

area di lavoro
working area



ø A	n° mandrini n° spindles
20	3
24,5	4
29,5	5
34,5	6
39,5	7
45	8



BAH

TA.CP

TA

MO

HT

VH

TSI/TSX

T

MT-T-C3

Accessori
Accessories

Appendice tecnica
Technical supplement

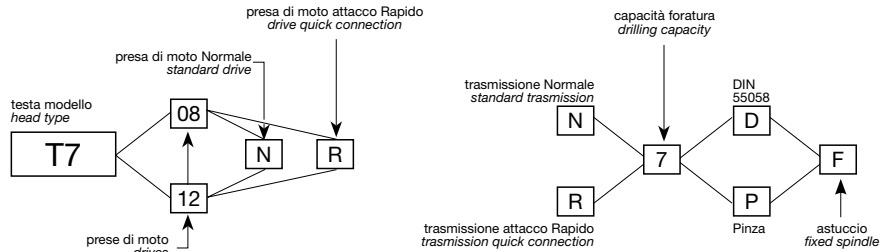
8-3

testa multipla a giunti universali - adjustable joint multispindle head

T7

Codice testa
Head code

Codice mandrino
Spindle code



N° prese di moto
Nr. spindle drives

08-12

Rapporto
Ratio

1-1

Capacità di foratura
Drilling capacity
acciaio R=500 N/mm²
ghisa: GG25

6
7

Maschiatura
Tapping

M5

Attacco utensile
Type of spindle

D
P

DIN 55058 Ø10
ER11

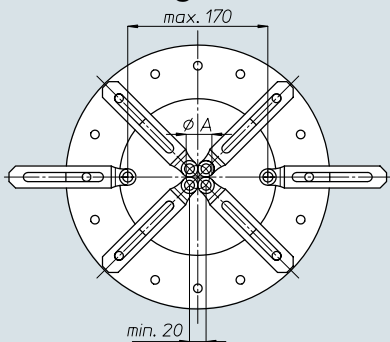
Peso gruppo testa
Head weight

Kg 10

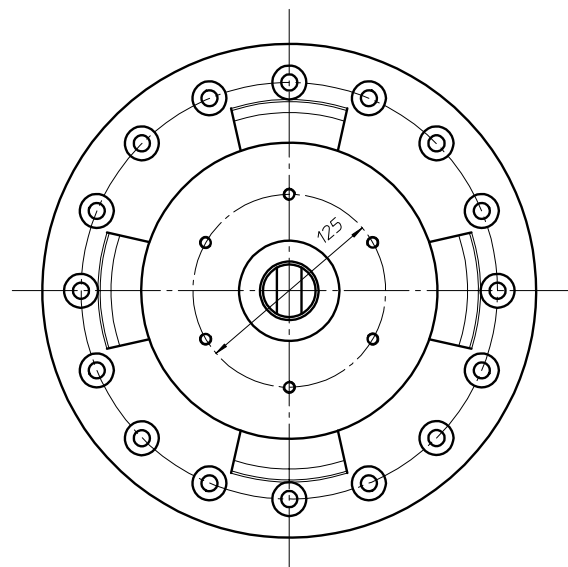
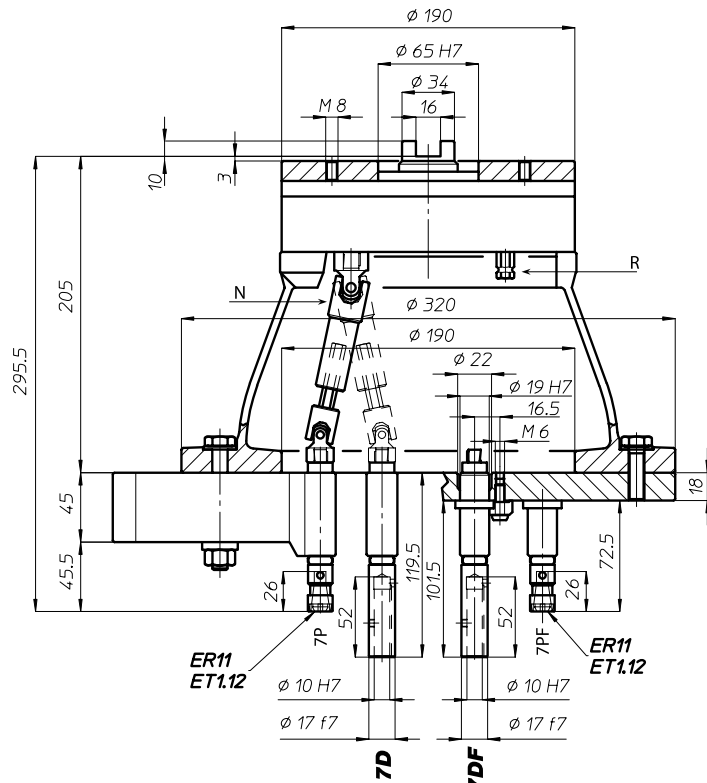
Peso gruppo mandrino
Spindle-set weight

Kg 1,1

area di lavoro
working area



ø A	n° mandrini n° spindles
23,5	3
28,5	4
34,5	5
40,5	6
46,5	7
52,5	8
59	9
65,5	10
71,5	11
77,5	12



BAH

TA-CP

TA

MO

HT

VH

TSI/TSX

T

MT-TC-TC3

Accessori
Accessories

Appendice tecnica
Technical supplement

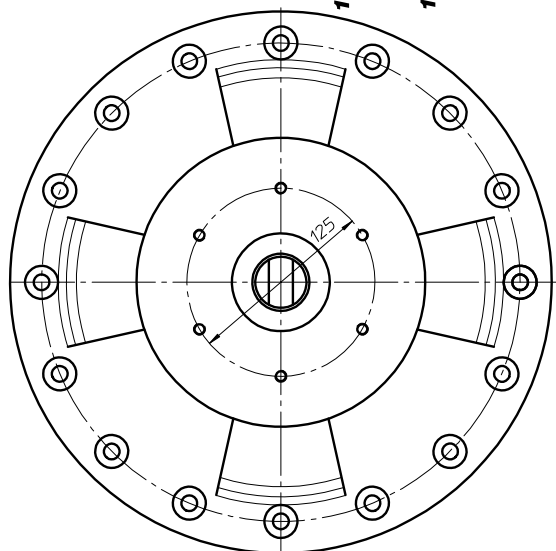
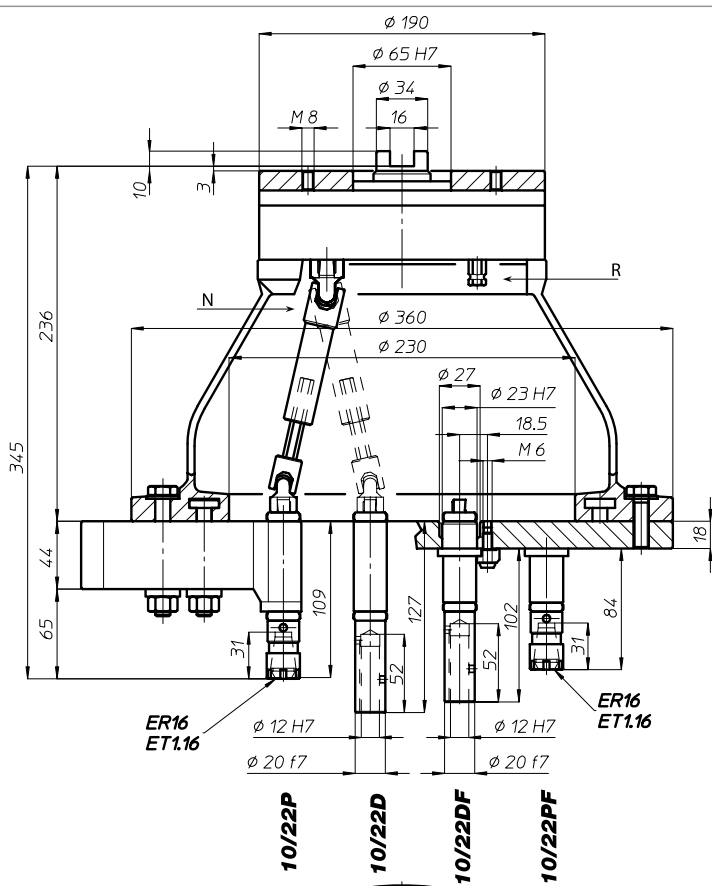
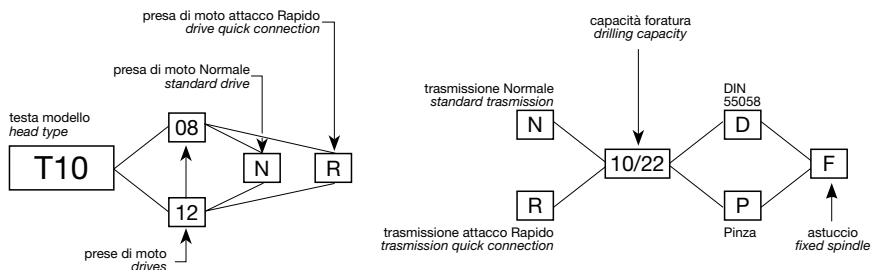
8-4



T10

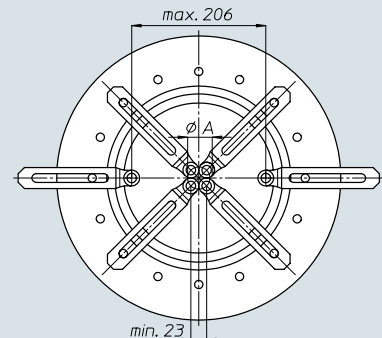
Codice testa
Head code

Codice mandrino
Spindle code



	N° prese di moto Nr. spindle drives	08-12
	Rapporto Ratio	1-1
	Capacità di foratura Drilling capacity acciaio R=500 N/mm ² ghisa: GG25	8 10
	Maschiatura Tapping	M6
	Attacco utensile Type of spindle D P	DIN 55058 Ø12 ER16
	Peso gruppo testa Head weight	Kg 12
	Peso gruppo mandrino Spindle-set weight	Kg 1,5

area di lavoro working area



ø A	n° mandrini n° spindles
27	3
33	4
39,5	5
46,5	6
53,5	7
60,5	8
67,5	9
75	10
82	11
89,5	12

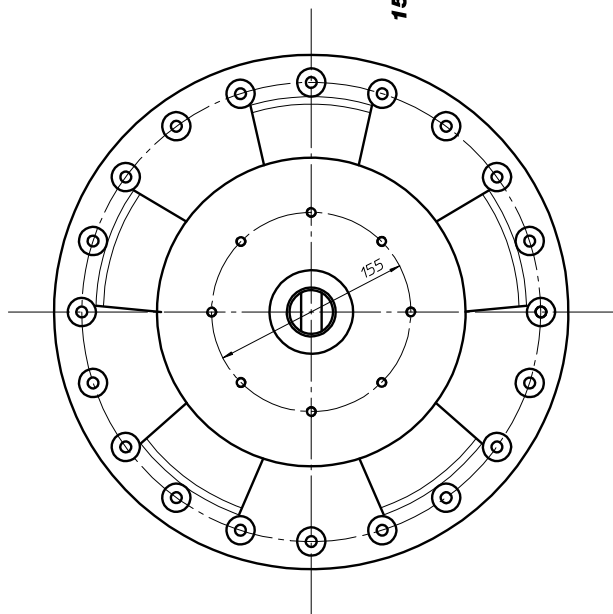
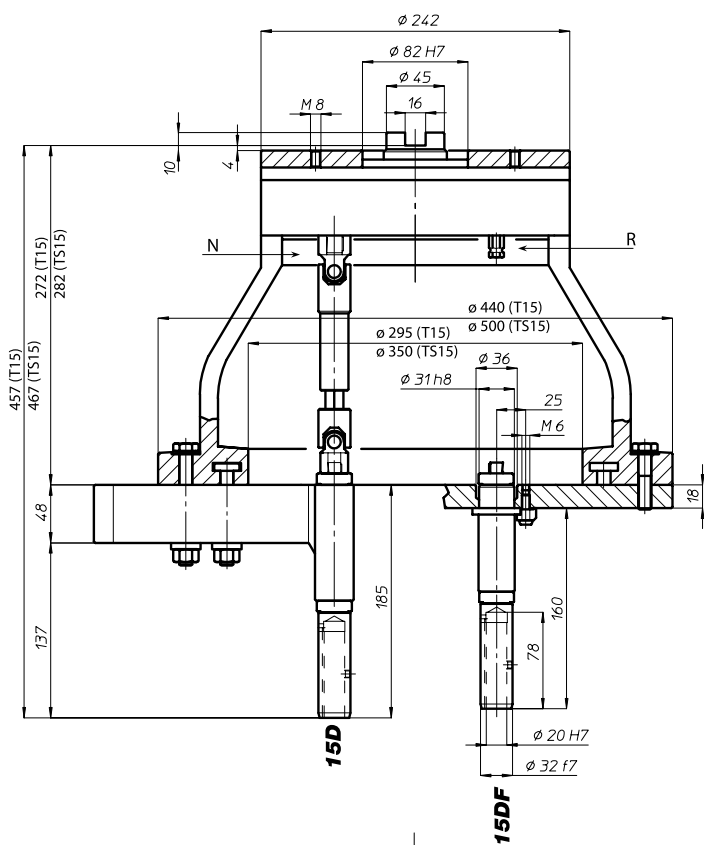
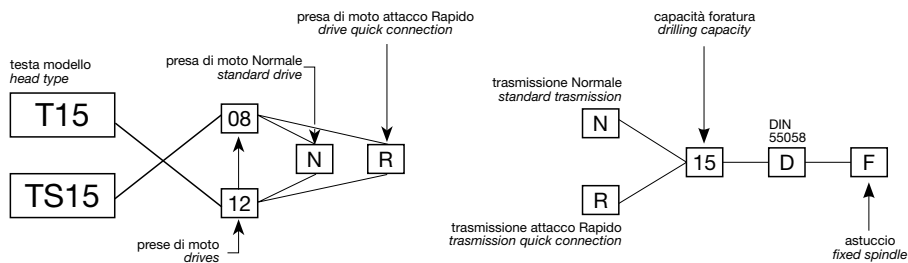


BAH
TA.CP
TA
MO
HT
VH
TSI/TSX
T
MT-TC-TC3
Accessori
Accessories
Appendice tecnica
Technical supplement
8-5

T15-TS15

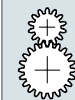
Codice testa
Head code

Codice mandrino
Spindle code



N° prese di moto
Nr. spindle drives

08-12



Rapporto
Ratio

1-1



Capacità di foratura
Drilling capacity
acciaio R=500 N/mm²
ghisa: GG25

13
15



Maschiatura
Tapping

M12



Attacco utensile
Type of spindle
D

DIN 55058 Ø20



Peso gruppo testa
Head weight

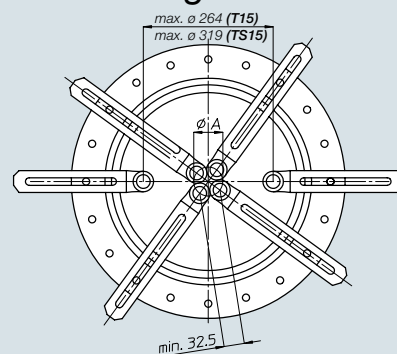
T15: Kg 21,5
TS15: Kg 24,5



Peso gruppo mandrino
Spindle-set weight

Kg 2,6

area di lavoro
working area



Ø A	n° mandrini n° spindles
38	3
46,5	4
56	5
65,5	6
75,5	7
85,5	8
95,5	9
105,5	10
116	11
126	12



BAH

TA.CP

TA

MO

HT

VH

TSI/TSX

T

MT-TC-TC3

Accessori
Accessories

Appendice tecnica
Technical supplement

8-7

T18-TS18

Codice testa
Head code

Codice mandrino
Spindle code

N° prese di moto
Nr. spindle drives

08

Rapporto
Ratio

1-1

Capacità di foratura
Drilling capacity
acciaio R=500 N/mm²
ghisa: GG25

16
18

Maschiatura
Tapping

M14

Attacco utensile
Type of spindle
D

DIN 55058 Ø25

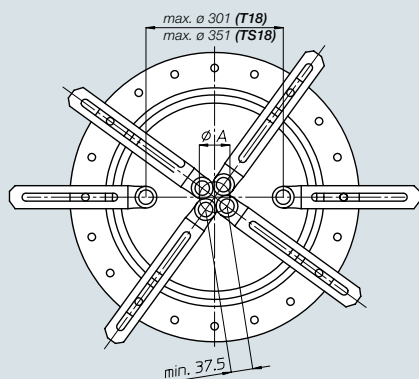
Peso gruppo testa
Head weight

T18: Kg 25
TS18: Kg 26,5

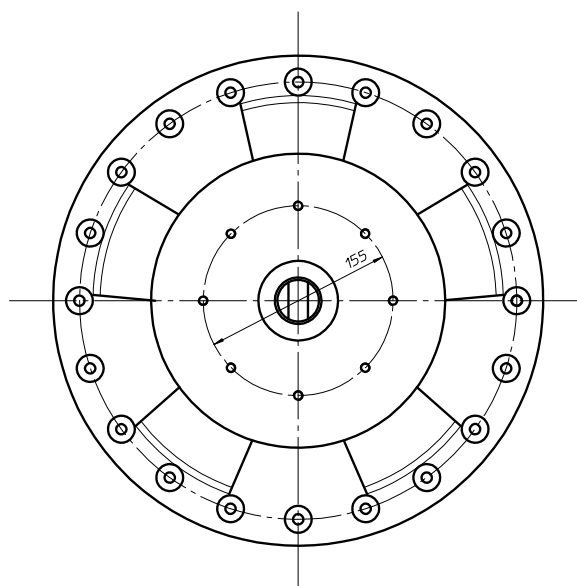
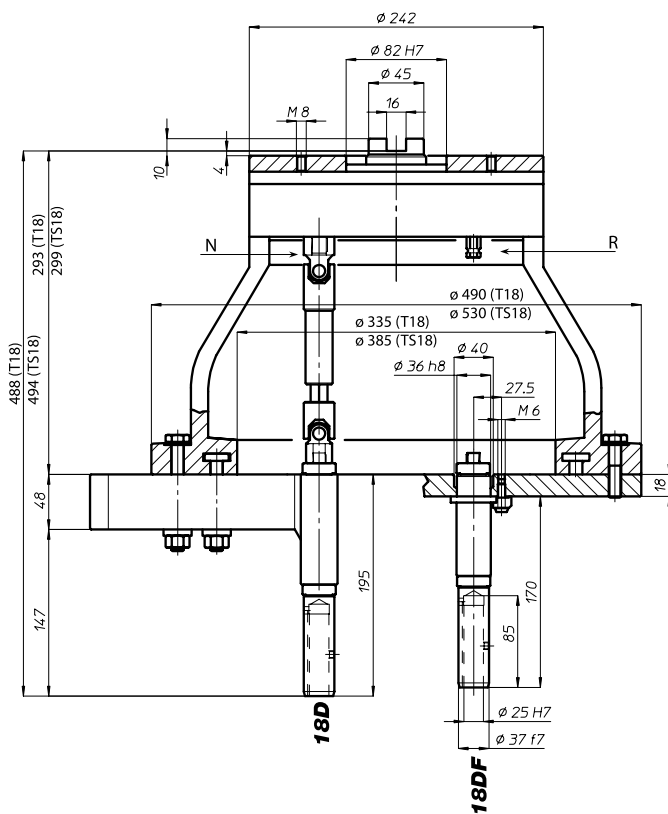
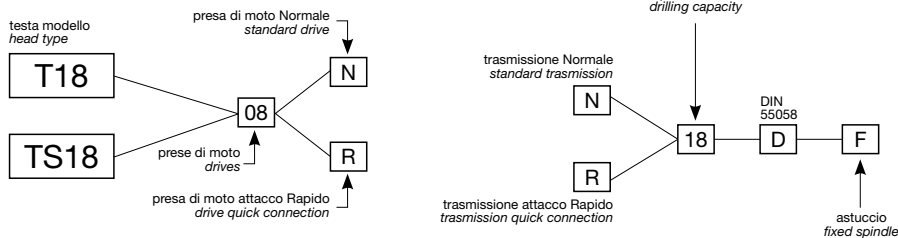
Peso gruppo mandrino
Spindle-set weight

Kg 3,3

area di lavoro working area



Ø A	n° mandrini n° spindles
44	3
53,5	4
64,5	5
75,5	6
87	7
98,5	8



BAH

TA-CP

TA

MO

HT

VH

TSI/TSX

T

MT-TC-TC3

Accessori
Accessories

Appendice tecnica
Technical supplement

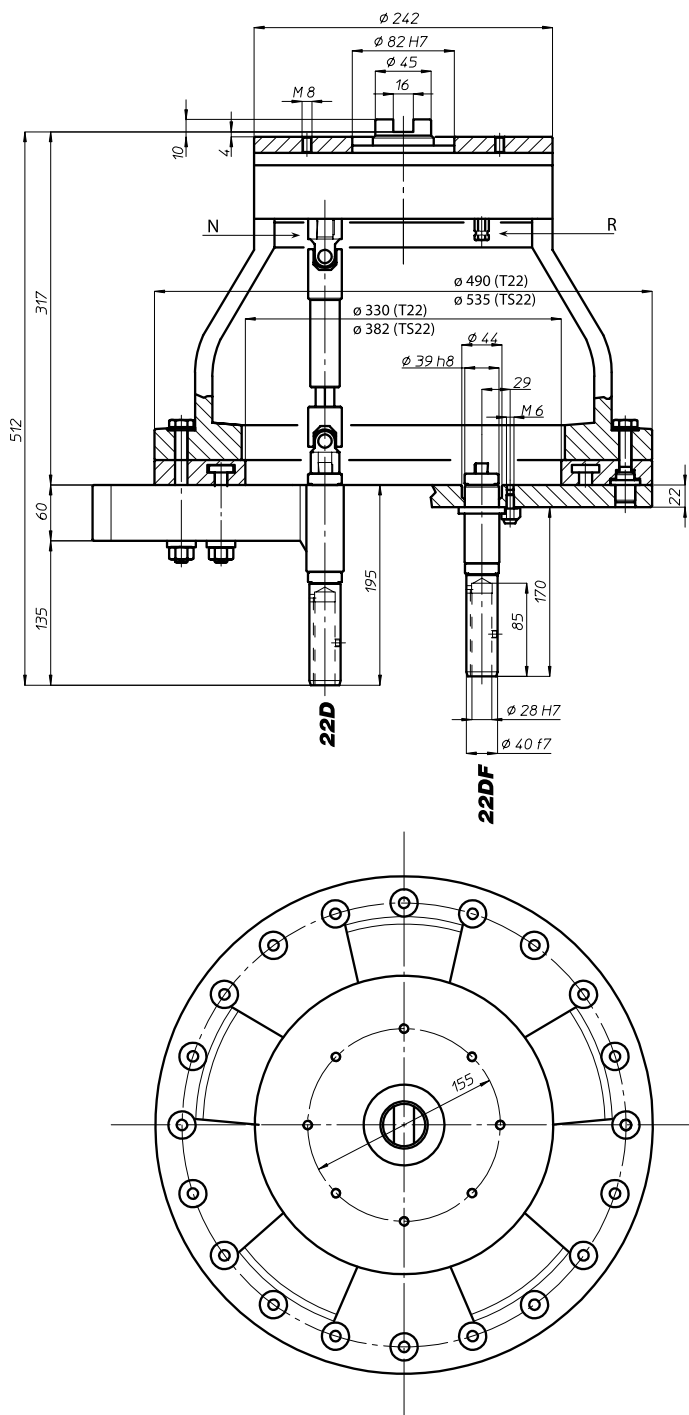
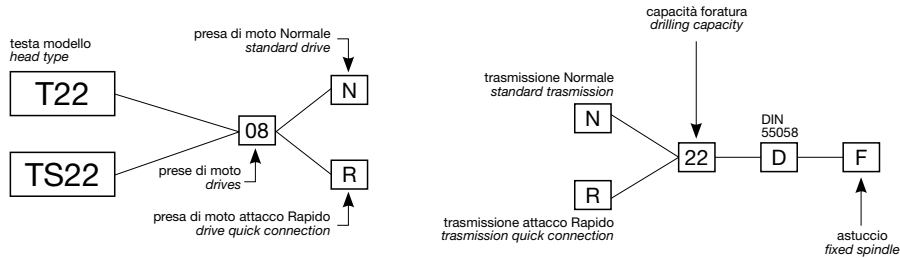
8-8



T22-TS22

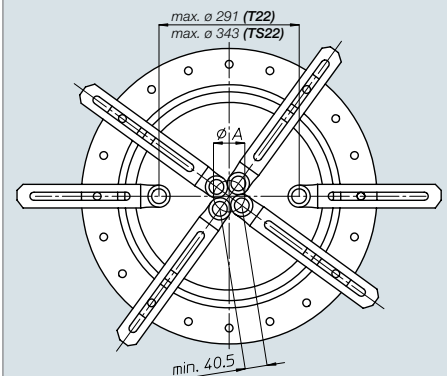
Codice testa
Head code

Codice mandrino
Spindle code



	N° prese di moto Nr. spindle drives	08
	Rapporto Ratio	1-1
	Capacità di foratura Drilling capacity acciaio R=500 N/mm ² ghisa: GG25	20 22
	Maschiatura Tapping	M16
	Attacco utensile Type of spindle D	DIN 55058 Ø28
	Peso gruppo testa Head weight	T22: Kg 38,5 TS22: Kg 41
	Peso gruppo mandrino Spindle-set weight	Kg 5,5

area di lavoro
working area



ϕA	n° mandrini n° spindles
47,5	3
58	4
69,5	5
81,5	6
94	7
106,5	8



BAH

TA-CP

TA

MO

HT

VH

TSI/TSX

T

MT-TC-TC3

Accessori
Accessories

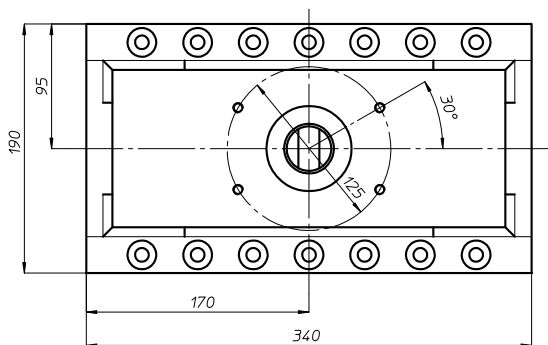
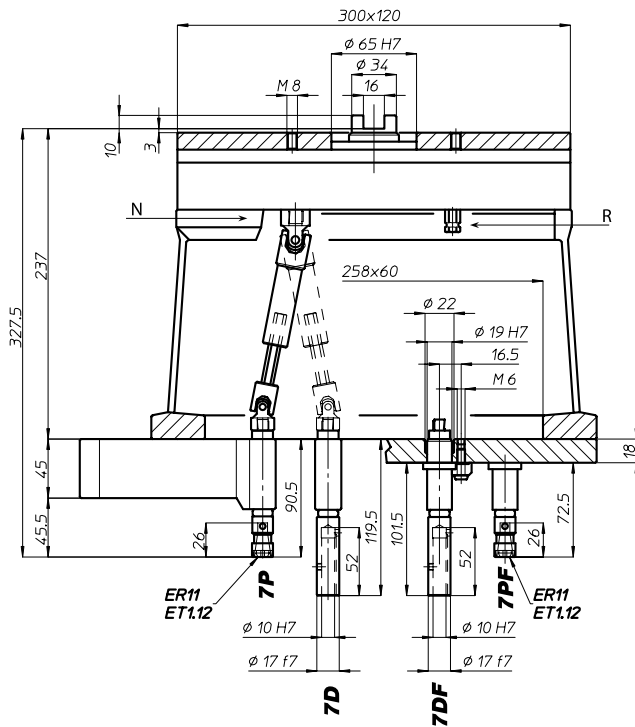
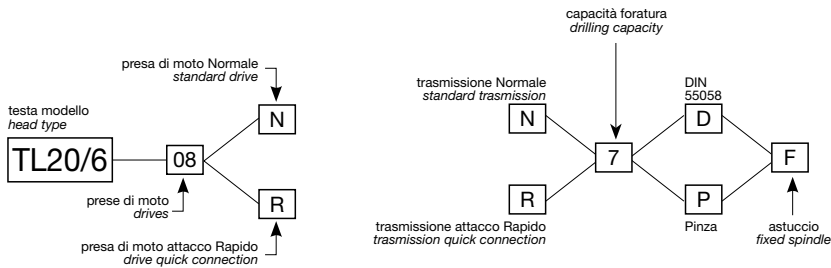
Appendice tecnica
Technical supplement

8-9

TL20/6

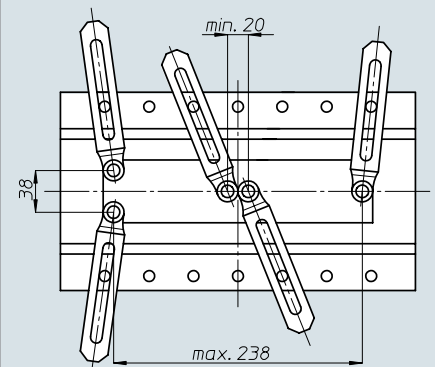
Codice testa
Head code

Codice mandrino
Spindle code



	N° prese di moto Nr. spindle drives	08
	Rapporto Ratio	1-1
	Capacità di foratura Drilling capacity acciaio R=500 N/mm ² ghisa: GG25	6 7
	Maschiatura Tapping	M5
	Attacco utensile Type of spindle D P	DIN 55058 $\phi 10$ ER11
	Peso gruppo testa Head weight	Kg 13,5
	Peso gruppo mandrino Spindle-set weight	Kg 1

area di lavoro
working area



BAH

TA.CP

TA

MO

HT

VH

TSI/TSX

T

MT-TC-TC3

Accessori
Accessories

Appendice tecnica
Technical supplement

TL20/8

Codice testa
Head code

Codice mandrino
Spindle code



N° prese di moto
Nr. spindle drives

08



Rapporto
Ratio

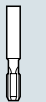
1-1



Capacità di foratura
Drilling capacity
acciaio R=500 N/mm²
ghisa: GG25

8

10



Maschiatura
Tapping

M6



Attacco utensile
Type of spindle

D
P

DIN 55058 Ø12
ER16



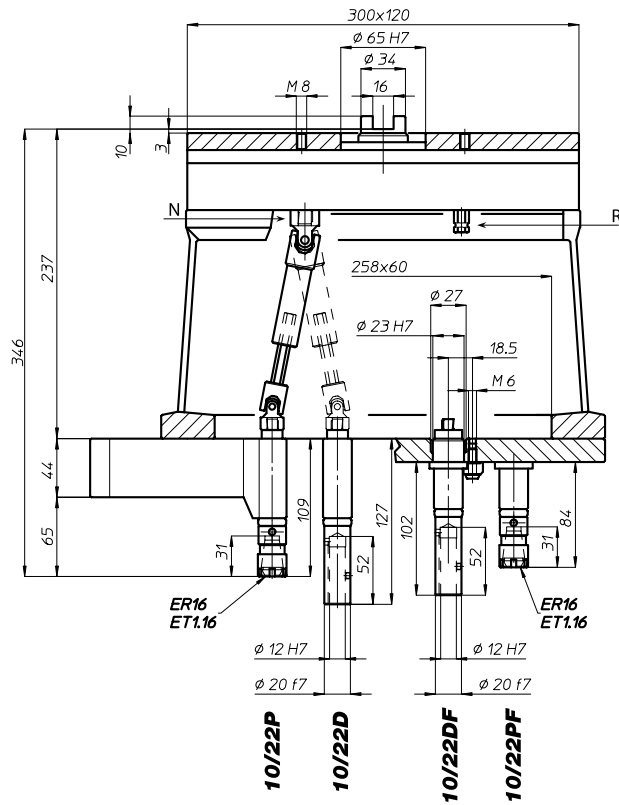
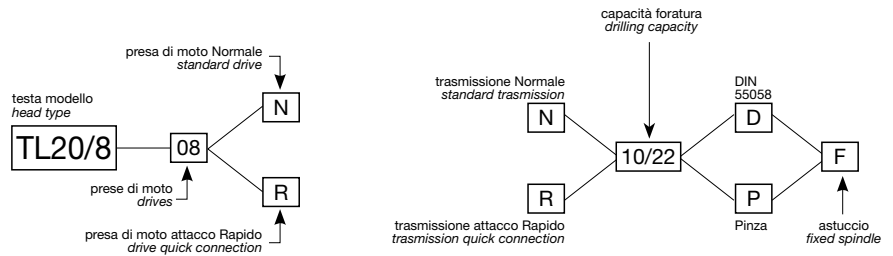
Peso gruppo testa
Head weight

Kg 13,5

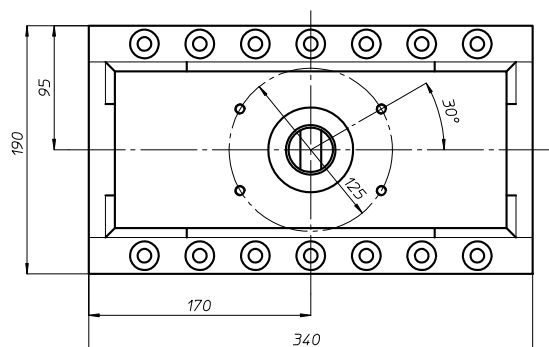
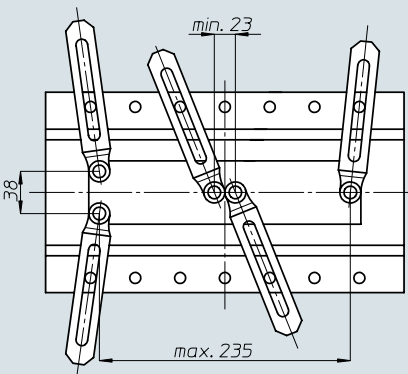


Peso gruppo mandrino
Spindle-set weight

Kg 1,5



area di lavoro
working area



BAH

TA-CP

TA

MO

HT

VH

TSI/TSX

T

MT-TC-TC3

Accessori
Accessories

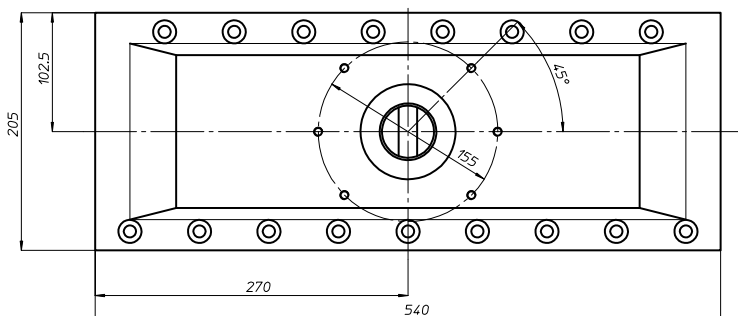
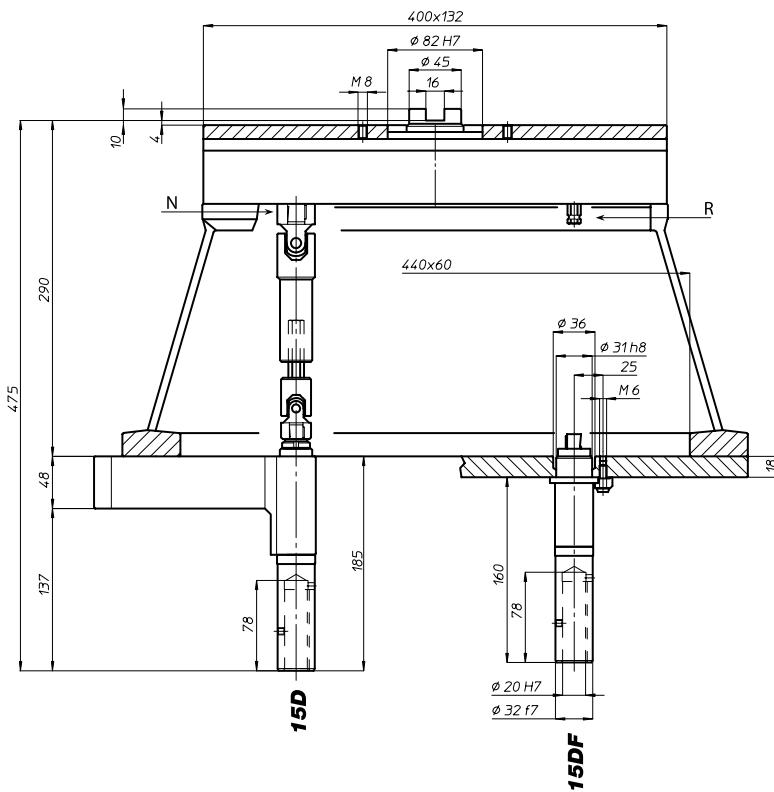
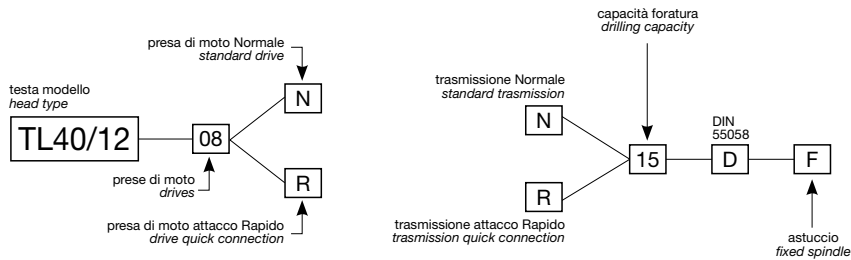
Appendice tecnica
Technical supplement



TL40/12

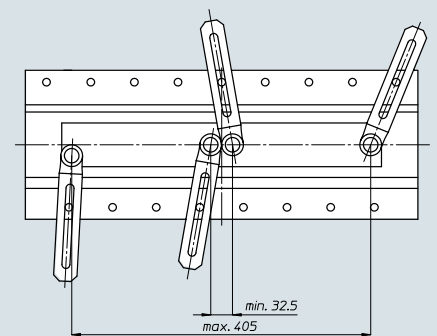
Codice testa
Head code

Codice mandrino
Spindle code



	N° prese di moto Nr. spindle drives	08
	Rapporto Ratio	1-1
	Capacità di foratura Drilling capacity acciaio R=500 N/mm ² ghisa: GG25	13 15
	Maschiatura Tapping	M12
	Attacco utensile Type of spindle D	DIN 55058 Ø20
	Peso gruppo testa Head weight	Kg 25
	Peso gruppo mandrino Spindle-set weight	Kg 2,5

area di lavoro
working area



BAH

TA.CP

TA

MO

HT

VH

TSI/TSX

T

MT-TC-TC3

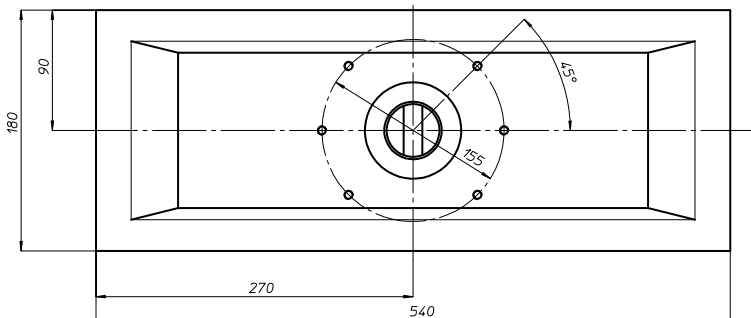
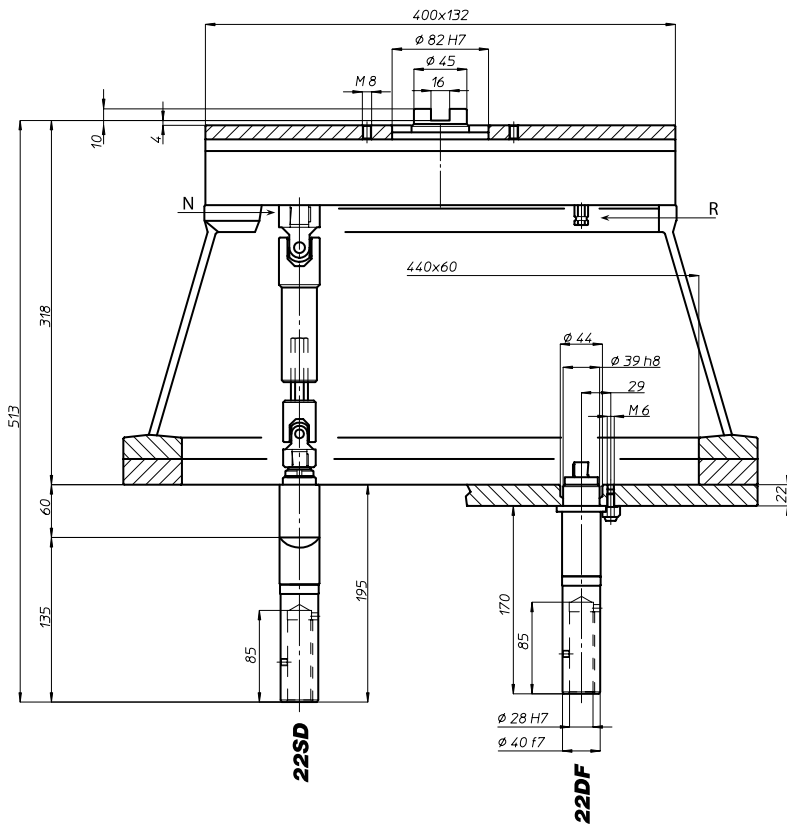
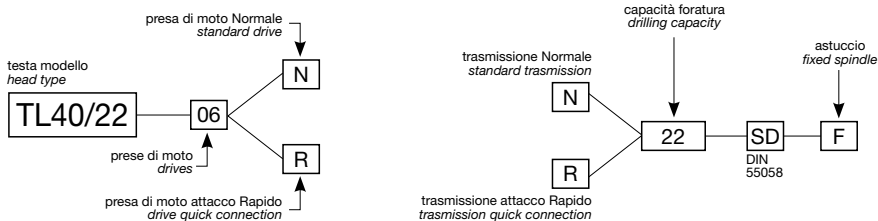
Accessori
Accessories

Appendice tecnica
Technical supplement

TL40/22

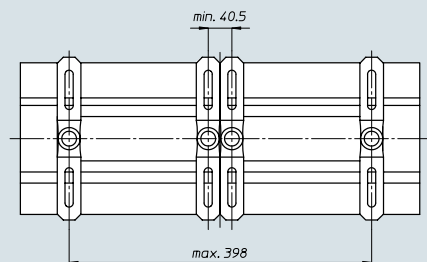
Codice testa
Head code

Codice mandrino
Spindle code



	N° prese di moto Nr. spindle drives	06
	Rapporto Ratio	1-1
	Capacità di foratura Drilling capacity acciaio R=500 N/mm ² ghisa: GG25	20 22
	Maschiatura Tapping	M16
	Attacco utensile Type of spindle D	DIN 55058 $\phi 28$
	Peso gruppo testa Head weight	Kg 37
	Peso gruppo mandrino Spindle-set weight	Kg 5

area di lavoro
working area



BAH

TA.CP

TA

MO

HT

VH

TSI/TSX

T

MT-TC-TC3

Accessori
Accessories

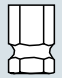
Appendice tecnica
Technical supplement

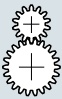
TL60/12




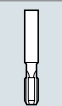
Codice testa
Head code

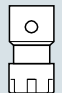
Codice mandrino
Spindle code


 N° prese di moto
Nr. spindle drives 08-12

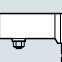
 Rapporto
Ratio 1-1

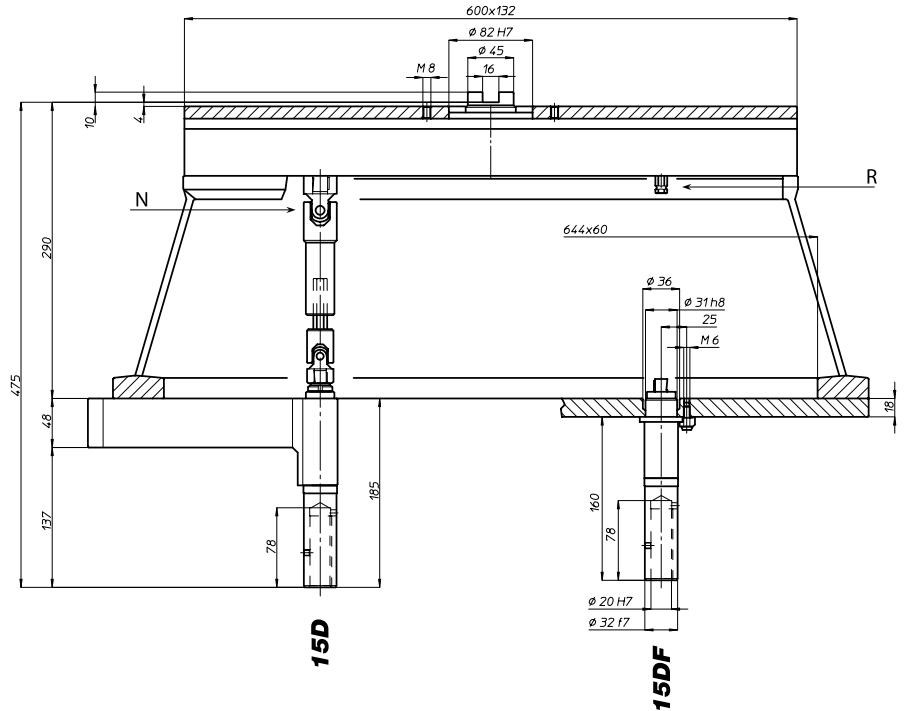
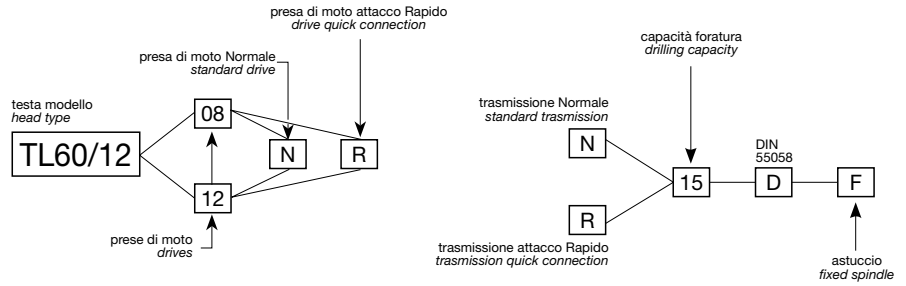
 Capacità di foratura
Drilling capacity
acciaio R=500 N/mm² 13
ghisa: GG25 15

 Maschiatura
Tapping M12

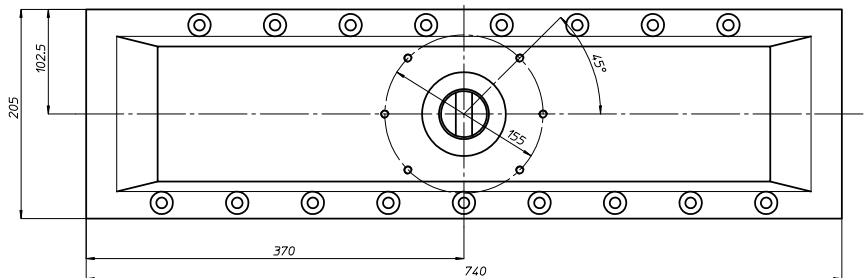
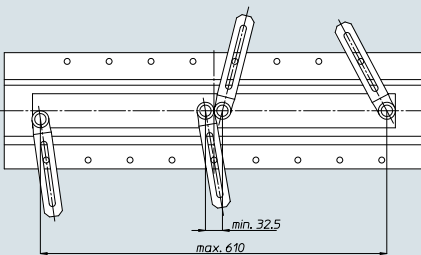
 Attacco utensile
Type of spindle D DIN 55058 Ø20

 Peso gruppo testa
Head weight Kg 34,5

 Peso gruppo mandrino
Spindle-set weight Kg 2,5



area di lavoro
working area



Accessori
Accessories

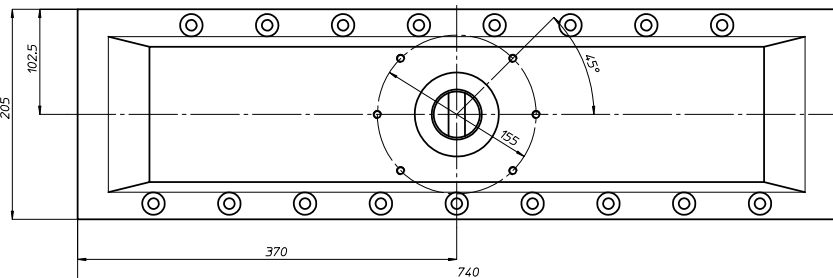
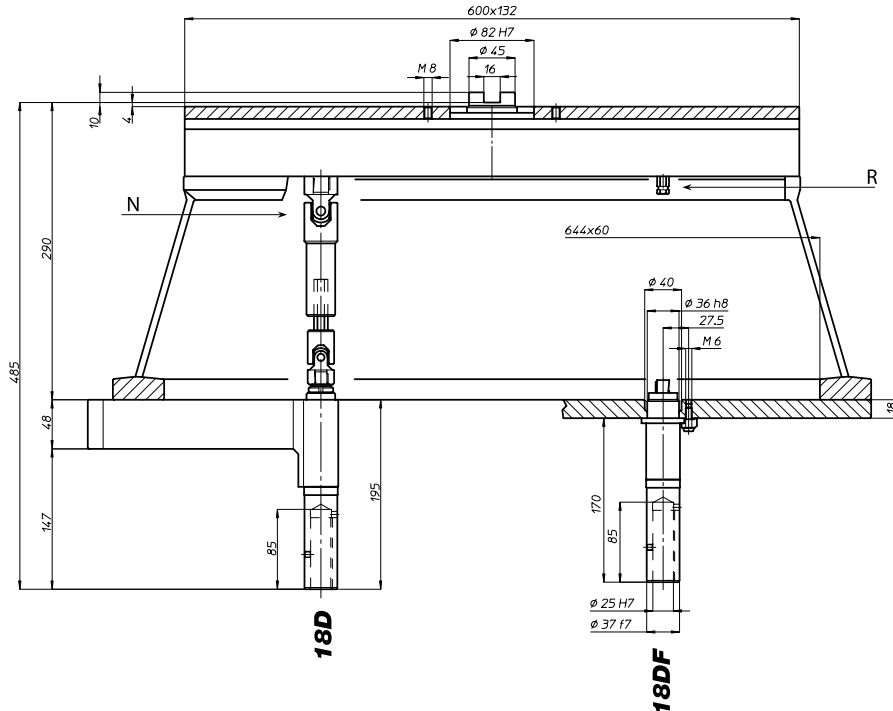
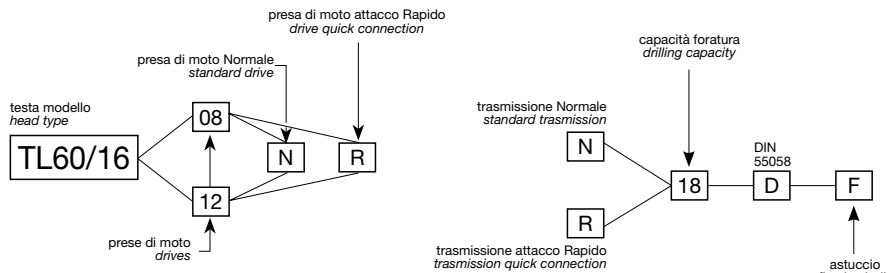
Appendice tecnica
Technical supplement



TL60/16

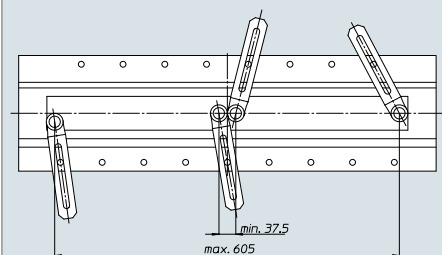
Codice testa
Head code

Codice mandrino
Spindle code



	N° prese di moto Nr. spindle drives	08-12
	Rapporto Ratio	1-1
	Capacità di foratura Drilling capacity acciaio R=500 N/mm ² ghisa: GG25	16 18
	Maschiatura Tapping	M14
	Attacco utensile Type of spindle D	DIN 55058 $\phi 25$
	Peso gruppo testa Head weight	Kg 36
	Peso gruppo mandrino Spindle-set weight	Kg 2,5

area di lavoro
working area



BAH

TA.CP

TA

MO

HT

VH

TSI/TSX

T

MT-TC-TC3

Accessori
Accessories

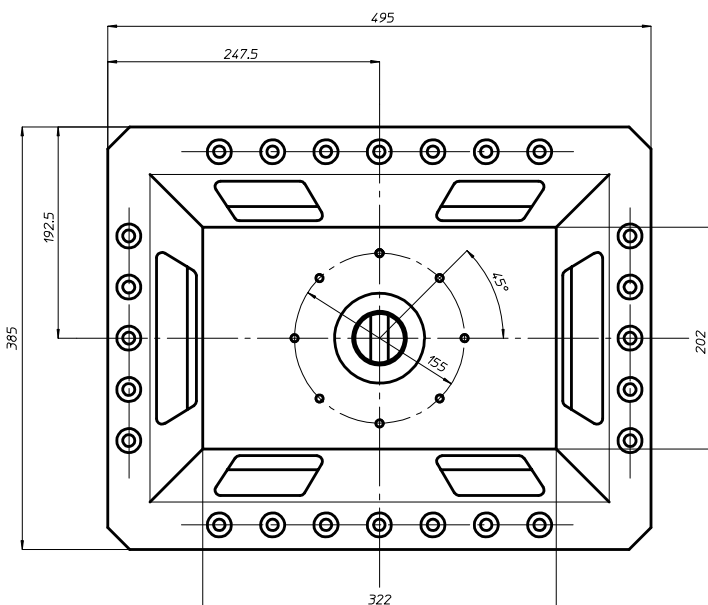
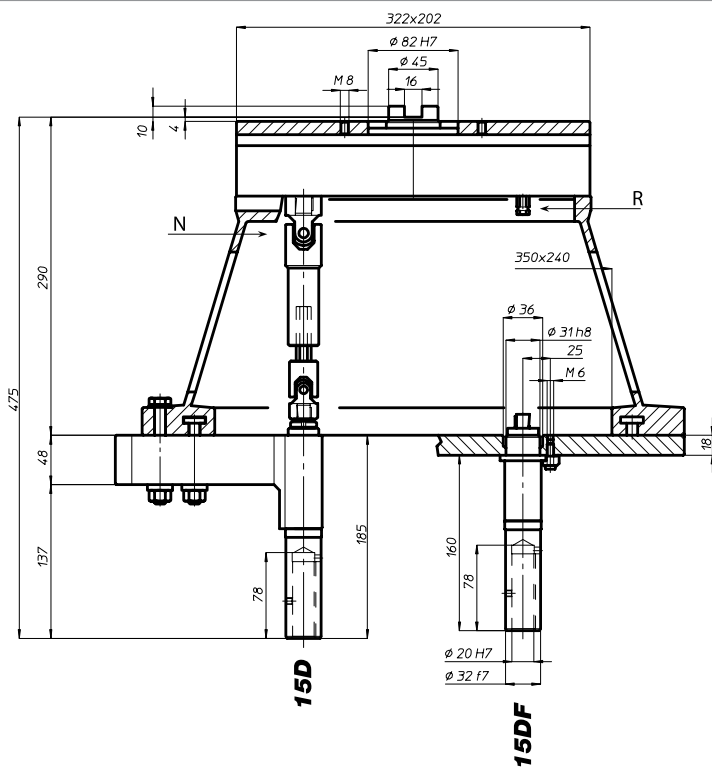
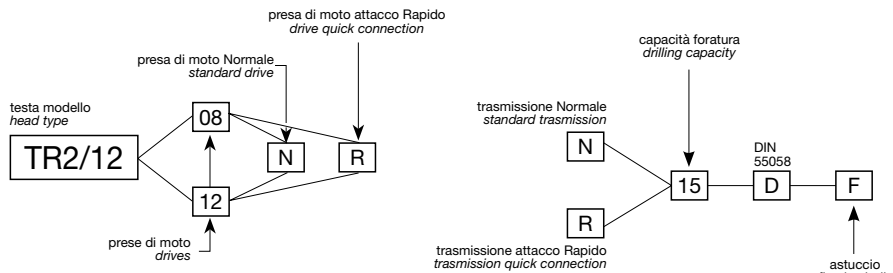
Appendice tecnica
Technical supplement

8-17

TR2/12

Codice testa
Head code

Codice mandrino
Spindle code



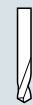
N° prese di moto
Nr. spindle drives

08-12



Rapporto
Ratio

1-1



Capacità di foratura
Drilling capacity
acciaio R=500 N/mm²
ghisa: GG25

13
15



Maschiatura
Tapping

M12



Attacco utensile
Type of spindle

DIN 55058 Ø20



Peso gruppo testa
Head weight

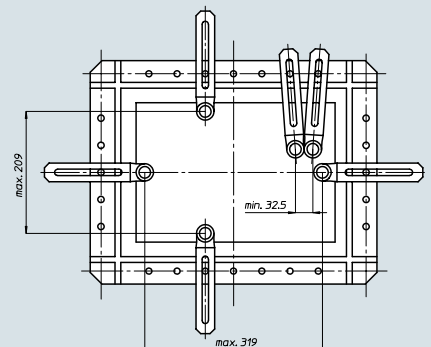
Kg 30



Peso gruppo mandrino
Spindle-set weight

Kg 2,6

area di lavoro
working area



BAH

TA.CP

TA

MO

HT

VH

TSI/TSX

T

MT-TC-TC3

Accessori
Accessories

Appendice tecnica
Technical supplement

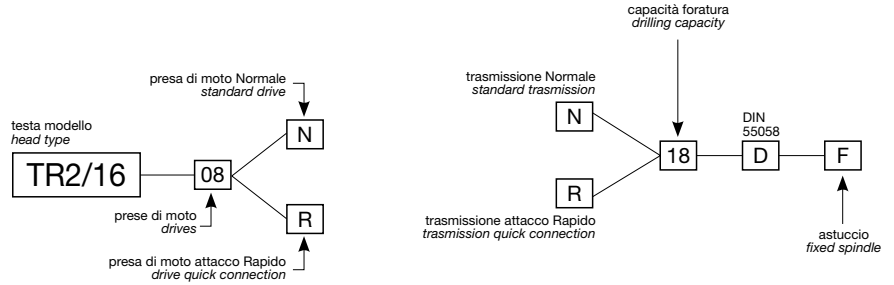
8-19

TR2/16



Codice testa
Head code

Codice mandrino
Spindle code



N° prese di moto
Nr. spindle drives

10



Rapporto
Ratio

1-1



Capacità di foratura
Drilling capacity
acciaio R=500 N/mm²
ghisa: GG25

16
18



Maschiatura
Tapping

M14



Attacco utensile
Type of spindle

D DIN 55058 Ø25



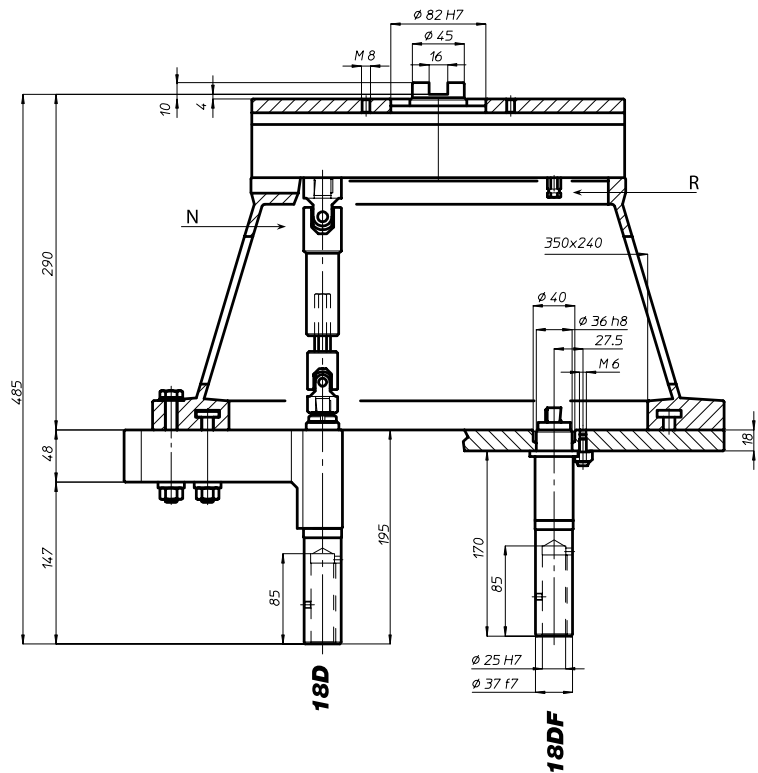
Peso gruppo testa
Head weight

Kg 31

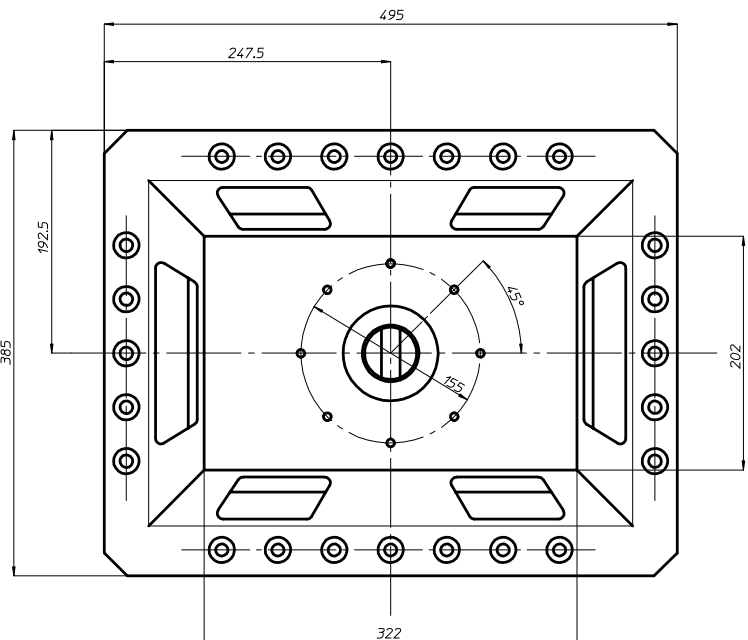
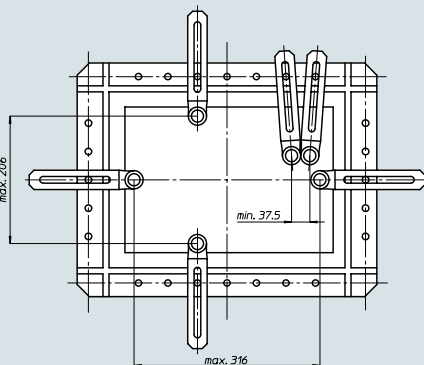


Peso gruppo mandrino
Spindle-set weight

Kg 3,3



area di lavoro
working area



BAH

TA-CP

TA

MO

HT

VH

TSI/TSX

T

MT-TC-TC3

Accessori
Accessories

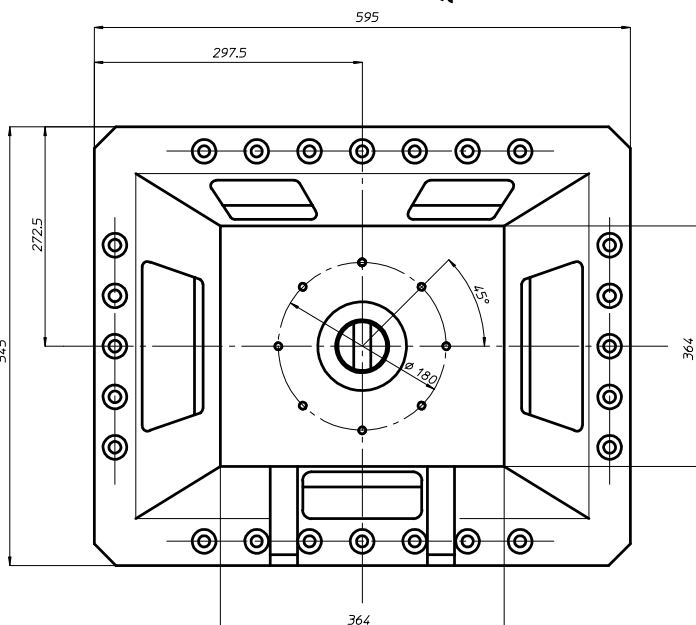
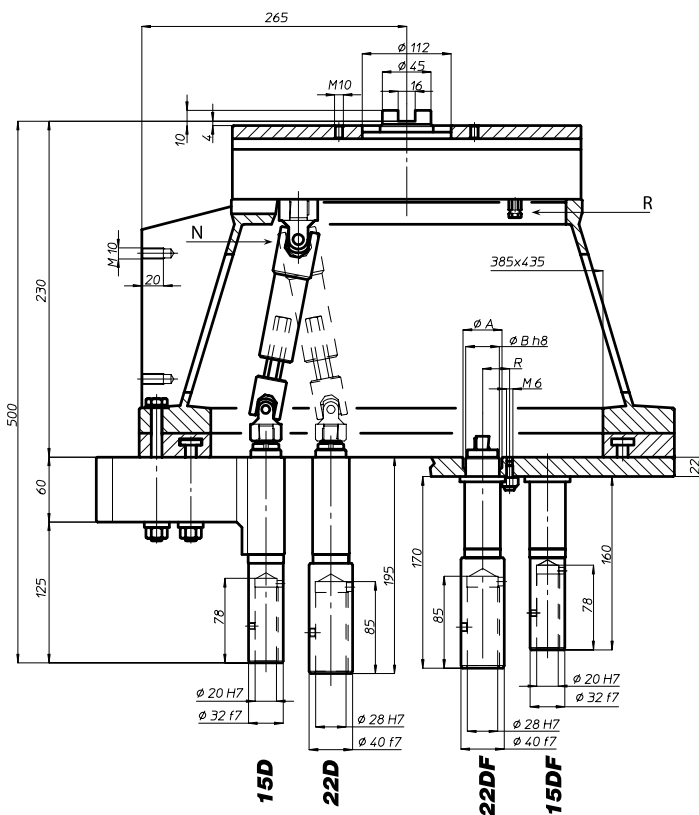
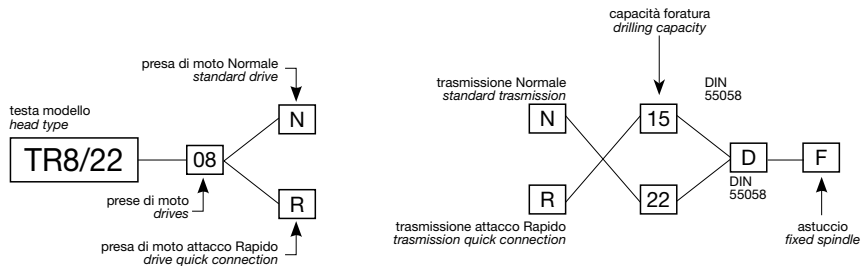
Appendice tecnica
Technical supplement



TR8/22

Codice testa
Head code

Codice mandrino
Spindle code



N° prese di moto
Nr. spindle drives

12



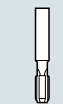
Rapporto
Ratio

1-1,5



Capacità di foratura
Drilling capacity
acciaio R=500 N/mm²
ghisa: GG25

15D: 13 22D: 20
15D: 15 22D: 22



Maschiatura
Tapping

15D: M12
22D: M16



Attacco utensile
Type of spindle
D

DIN 55058 Ø20-Ø28



Peso gruppo testa
Head weight

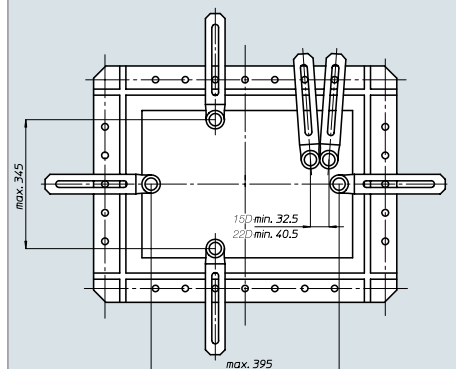
Kg 86



Peso gruppo mandrino
Spindle-set weight

15D: Kg 4
22D: Kg 5,5

area di lavoro
working area



BAH

TA-CP

TA

MO

HT

VH

TSI/TSX

T

MT-TC-TC3

Accessori
Accessories

Appendice tecnica
Technical supplement

TM400



Codice testa
Head code

testa modello
head type

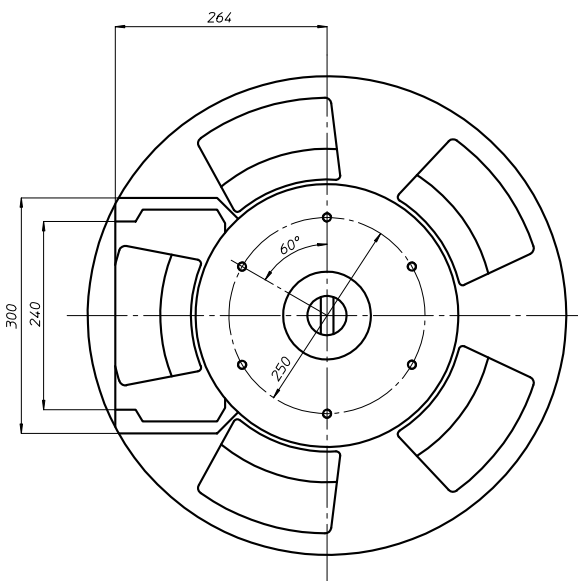
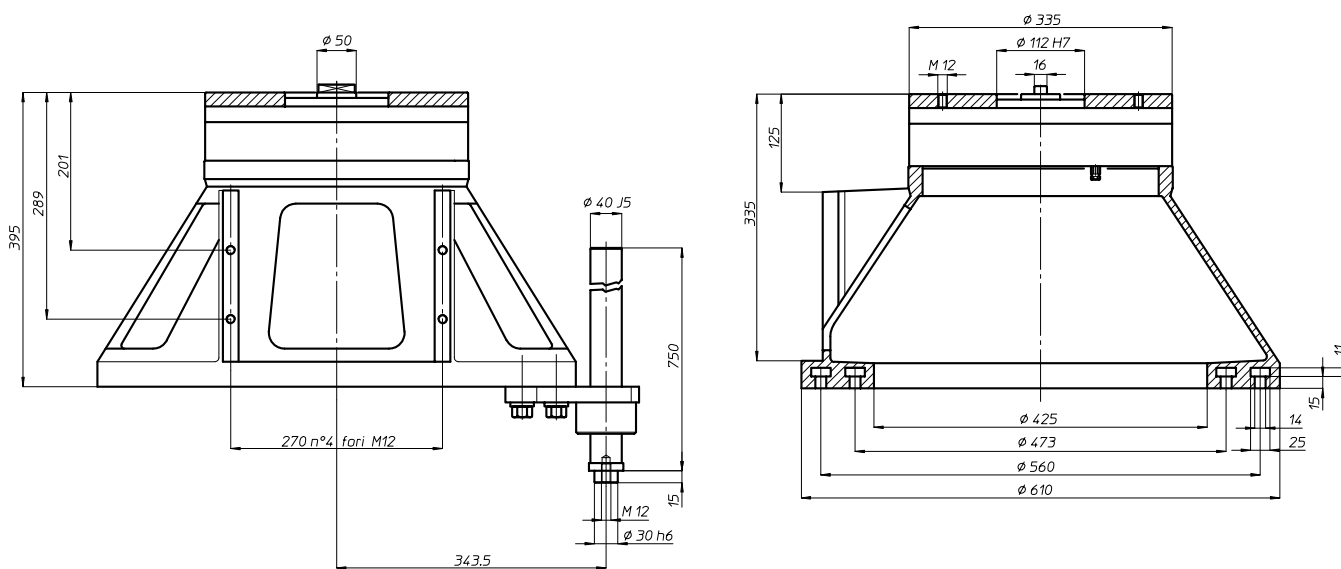
TM400

12

R

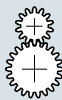
prese di moto
drives

presa di moto attacco Rapido
drive quick connection



N° prese di moto
Nr. spindle drives

12



Rapporto
Ratio

1-1



Peso
Weight

Kg 105

area di lavoro
working area

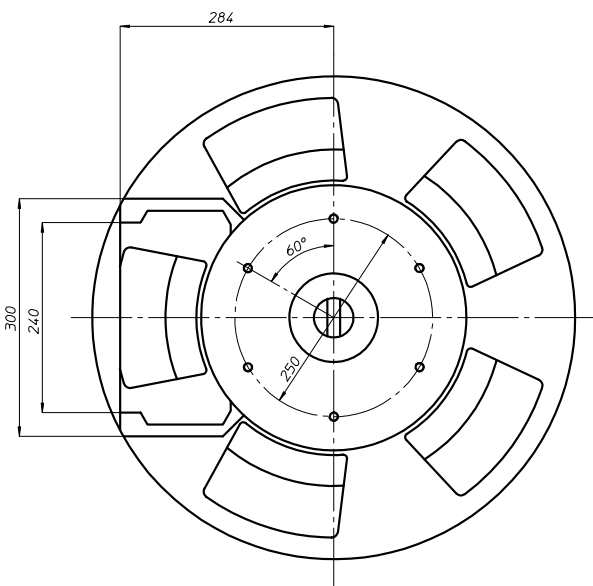
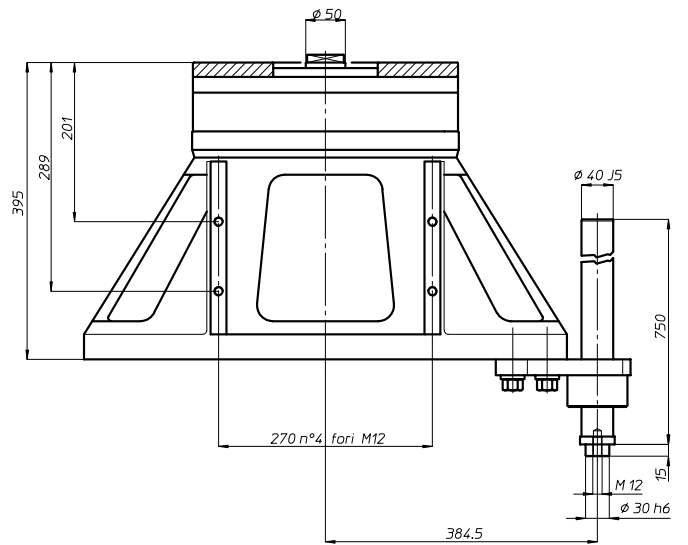
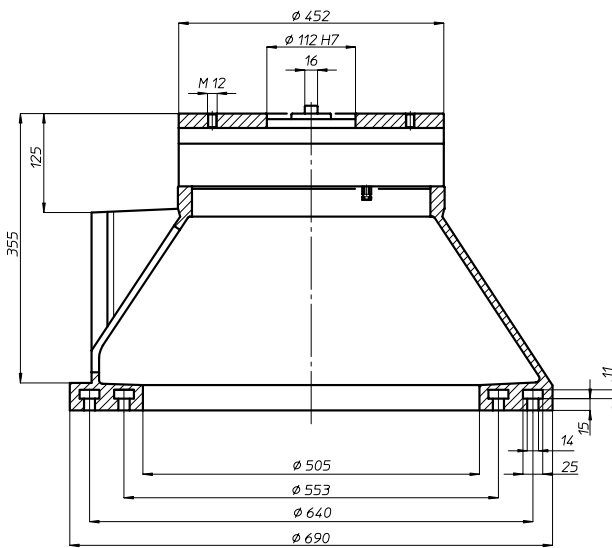
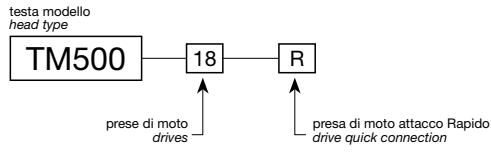
Ø 385



TM500



Codice testa
Head code



	N° prese di moto Nr. spindle drives	18
	Rapporto Ratio	1-1
	Peso Weight	Kg 145
area di lavoro working area		Ø 465

BAH

TA.CP

TA

MO

HT

VH

TSI/TSX

T

MT-TC-TC3

Accessori
Accessories

Appendice tecnica
Technical supplement



TRM43



Codice testa
Head code

testa modello
head type

TRM43 — 16 — R

prese di moto
drives

presa di moto attacco Rapido
drive quick connection



N° prese di moto
Nr. spindle drives

16



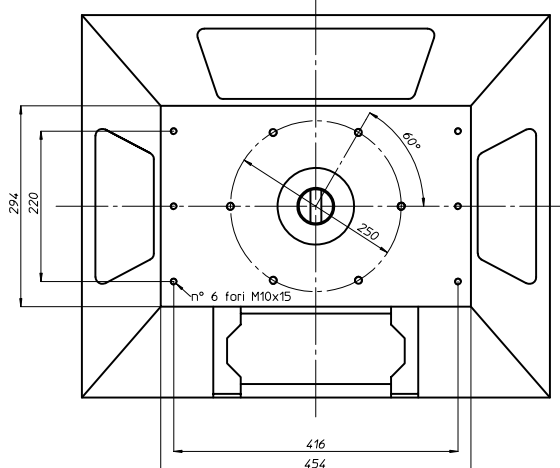
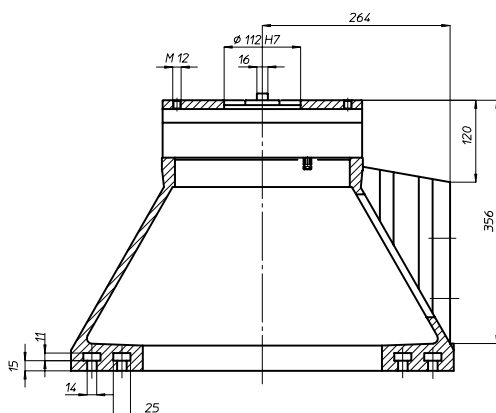
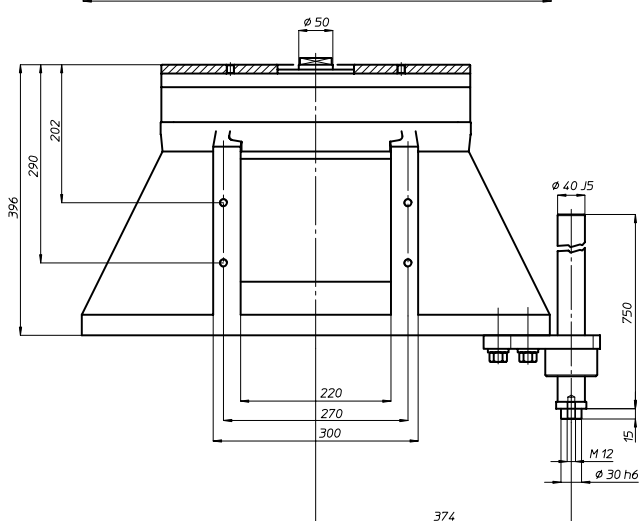
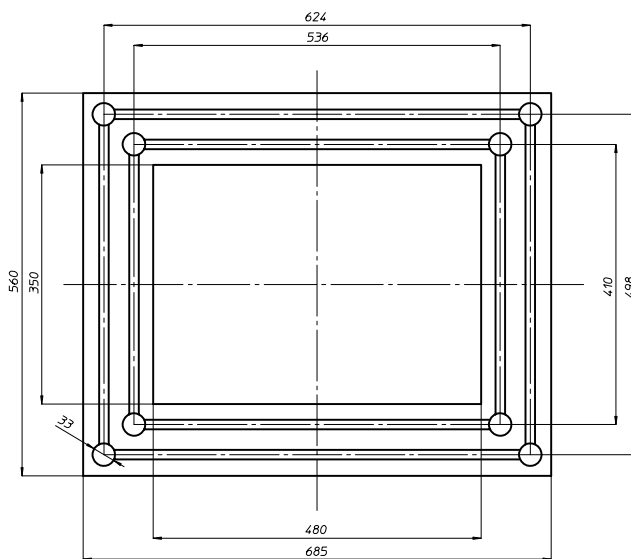
Rapporto
Ratio

1-1



Peso
Weight

Kg 135



area di lavoro
working area

300 x 440

BAH

TA-CP

TA

MO

HT

VH

TSI/TSX

T

MT-TC-TC3

Accessori
Accessories

Appendice tecnica
Technical supplement



TRM73

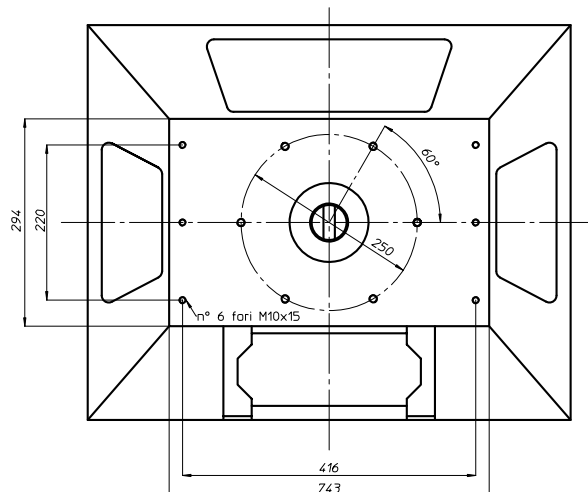
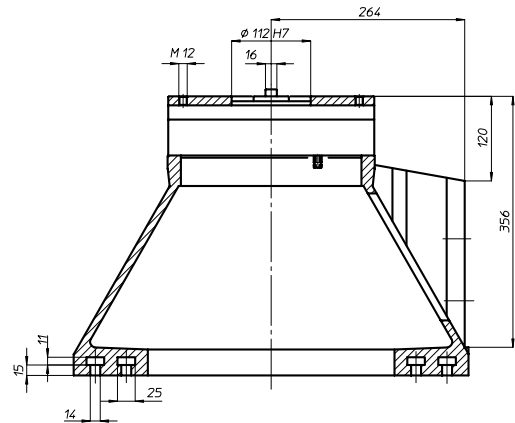
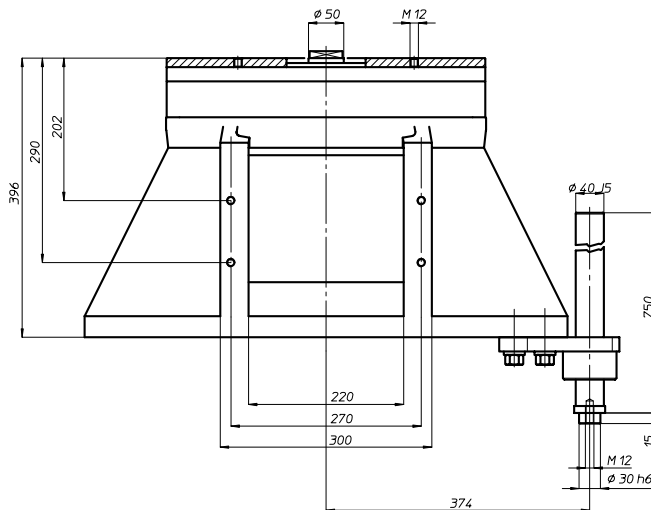
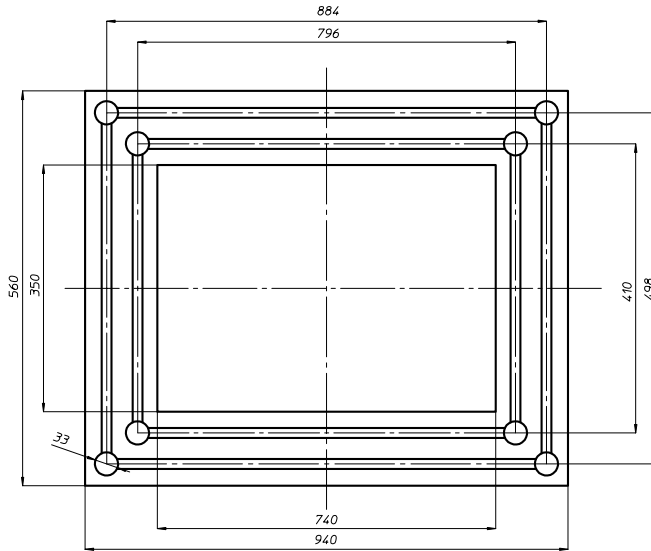
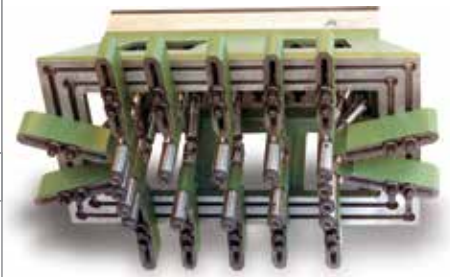
Codice testa
Head code

testa modello
head type



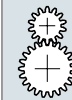
prese di moto
drives

presa di moto attacco Rapido
drive quick connection



N° prese di moto
Nr. spindle drives

26



Rapporto
Ratio

1-1



Peso
Weight

Kg 210

area di lavoro
working area

300 x 700



BAH

TA.CP

TA

MO

HT

VH

TSI/TSX

T

MT-TC-TC3

Accessori
Accessories

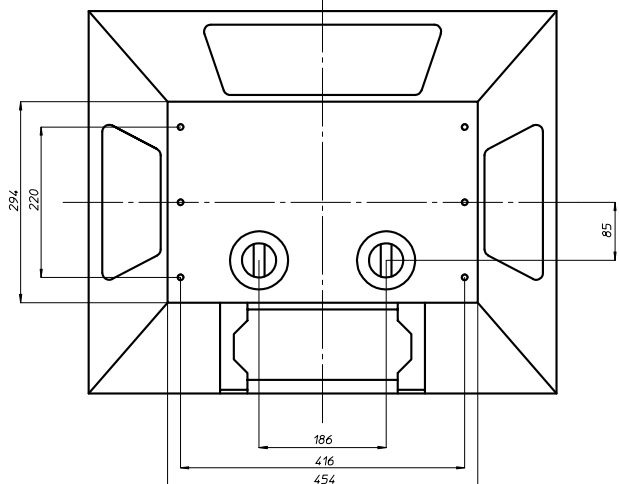
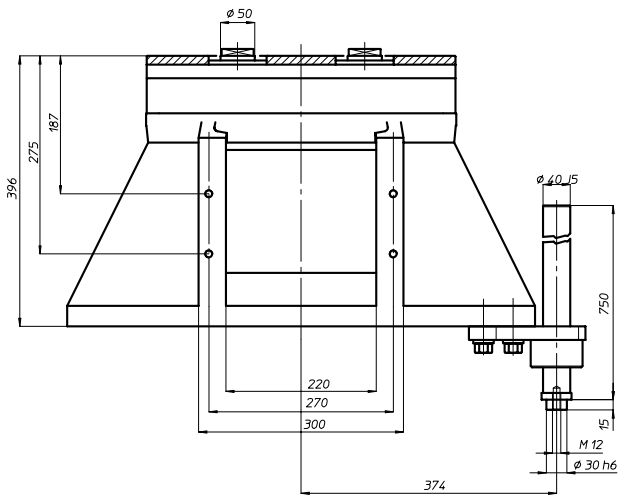
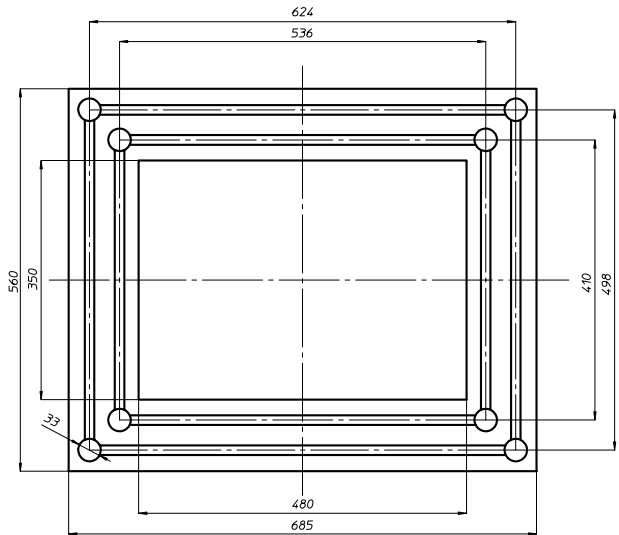
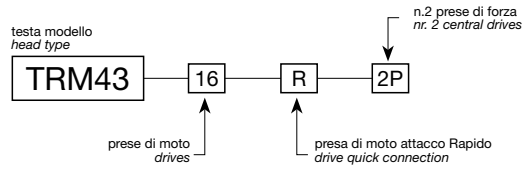
Appendice tecnica
Technical supplement

8-27

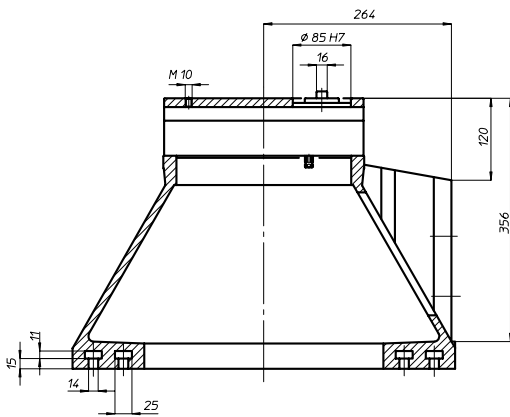
TRM43-2P



Codice testa
Head code



	N° prese di moto Nr. spindle drives	8+8
	Rapporto Ratio	1-1
	Peso Weight	Kg 140



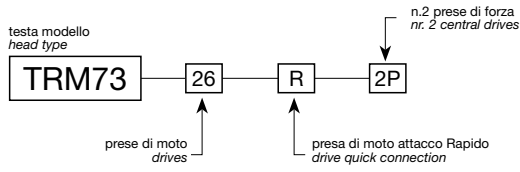
area di lavoro
working area

300 x 440

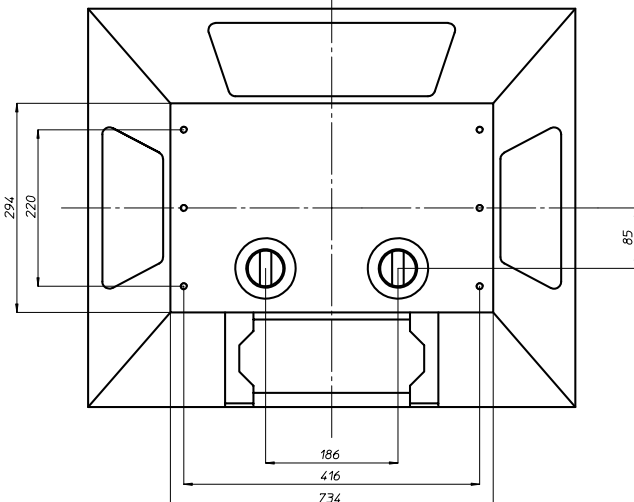
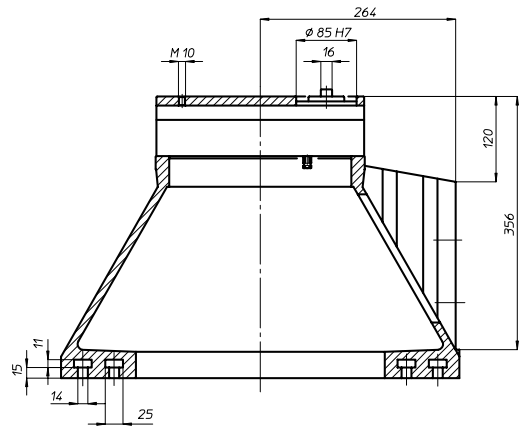
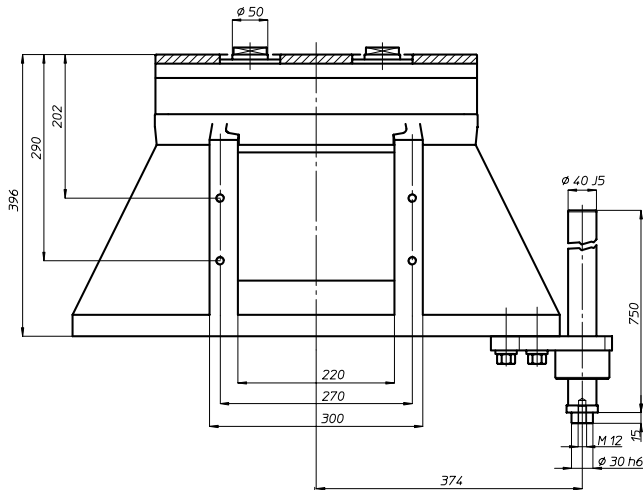
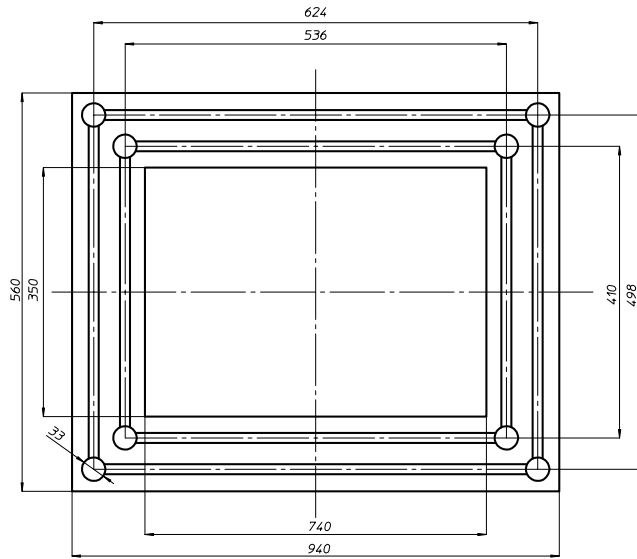
BAH
TA-CP
TA
MO
HT
VH
TSI/TSX
T
MT-TC-TC3
Accessori
Accessories
Appendice tecnica
Technical supplement
8-28



TRM73-2P

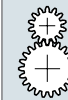


Codice testa
Head code



N° prese di moto
Nr. spindle drives

13+13



Rapporto
Ratio

1-1



Peso
Weight

Kg 210

area di lavoro
working area

300 x 700

BAH

TA.CP

TA

MO

HT

VH

TSI/TSX

T

MT-TC-TC3

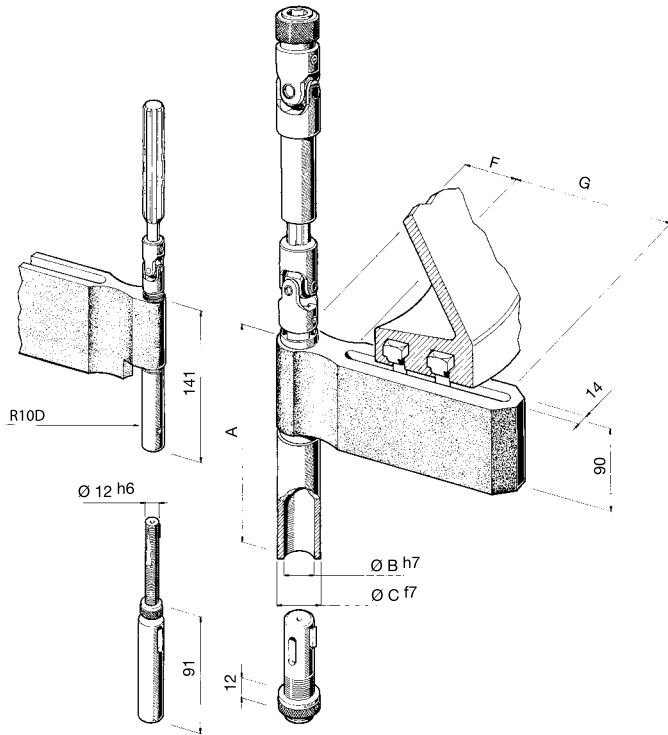
Accessori
Accessories

Appendice tecnica
Technical supplement



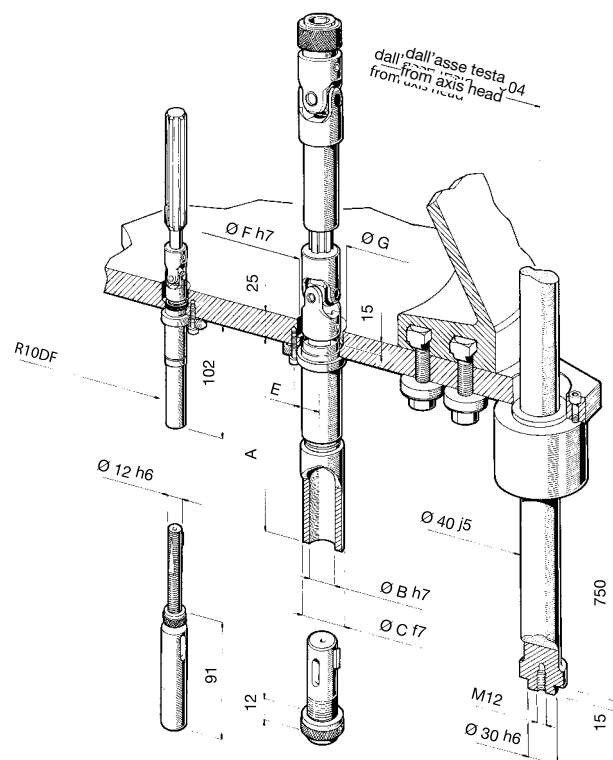
solo per teste TM-TRM for TM-TRM heads only

su staffa - *on arm*



Tipi mandrini spindles type	10D	12D	15D	18D	22D	25D
Codice code	R10D-S5 R10D-S6	R12D-S5 R12D-S6	R15D-S5 R15D-S6	R18D-S5 R18D-S6	R22D-S5 R22D-S6	R25D-S5 R25D-S6
Capacità foratura drilling capacity	8	10	13	16	20	22
acciaio R=500 N/mm ghisa: GG25	10	12	15	18	22	25
Capacità maschiatura tapping	M6	M8	M12	M14	M16	M18
A	127	181	185	194	195	232
ØB h7	12	16	20	25	28	32
ØC f7	20	25	32	37	40	45
F	59	55	55	55	55	60
G	200 270	200 270	200 270	200 270	200 270	200 270
Interasse minimo center distance	23	28	32,5	37,5	40,5	50
Peso weight	kg 4,0 4,5	4,7 5,2	5,2 5,7	5,5 6,3	6,6 7,4	8,6 9,5

su astuccio per flangia fissa - *fixed plate spindle*

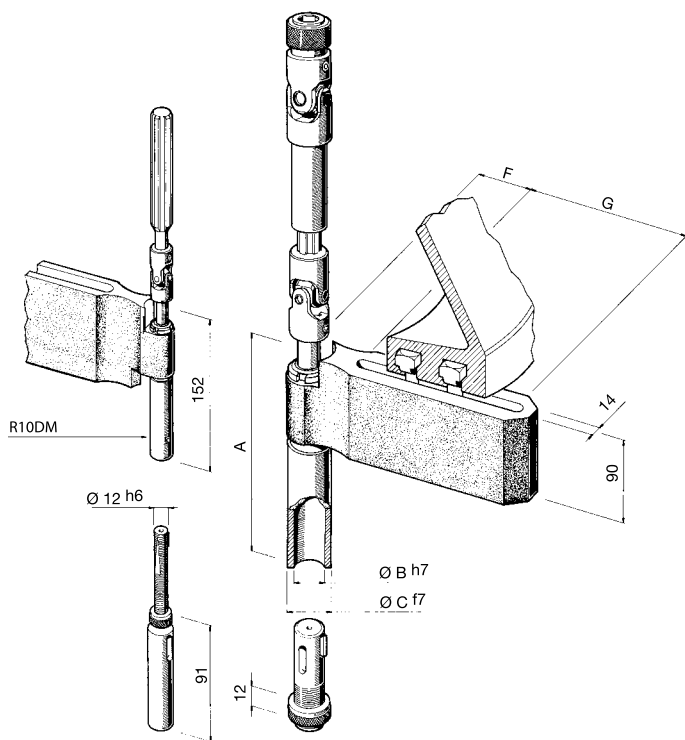


Tipi mandrini spindles type	10D	12D	15D	18D	22D	25D
Codice code	R10DF	R12DF	R15DF	R18DF	R22DF	R25DF
Capacità foratura drilling capacity	8	10	13	16	20	22
acciaio R=500 N/mm ghisa: GG25	10	12	15	18	22	25
Capacità maschiatura tapping	M6	M8	M12	M14	M16	M18
A	102	156	160	169	170	207
ØB h7	12	16	20	25	28	32
ØC f7	20	25	32	37	40	45
E Interasse vite M6 distance screw M6	18,5	23	25	27,5	29	34
ØF h7	23	27,5	31	36	39	50
ØG	27	32	36	40	44	56
Interasse minimo center distance	23,5	28	32,5	37,5	40,5	50,5
Peso weight	kg 2,0	2,3	2,6	3,4	3,8	5,2



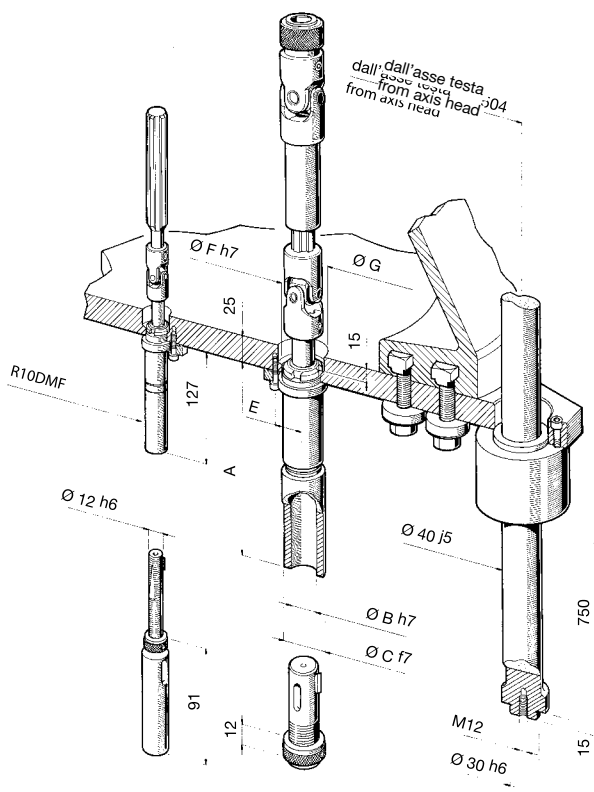
solo per teste TM-TRM for TM-TRM heads only

su staffa - on arm



Tipi mandrini spindles type	10DM	15DM	22DM
Codice code	R10DM-S5 R10DM-S6	R15DM-S5 R15DM-S6	R22DM-S5 R22DM-S6
Capacità maschiatura tapping	M6	M12	M16
Corsa maschiatura Tapping stroke	40	40	40
A	152	208	217
ØB h7	12	20	28
ØC f7	20	32	40
F	59	55	55
G	200 270	200 270	200 270
Interasse minimo center distance	23	32,5	40,5
Peso weight	kg 4,0 4,5	5,2 5,7	6,6 7,4

su astuccio per flangia fissa - fixed plate spindle

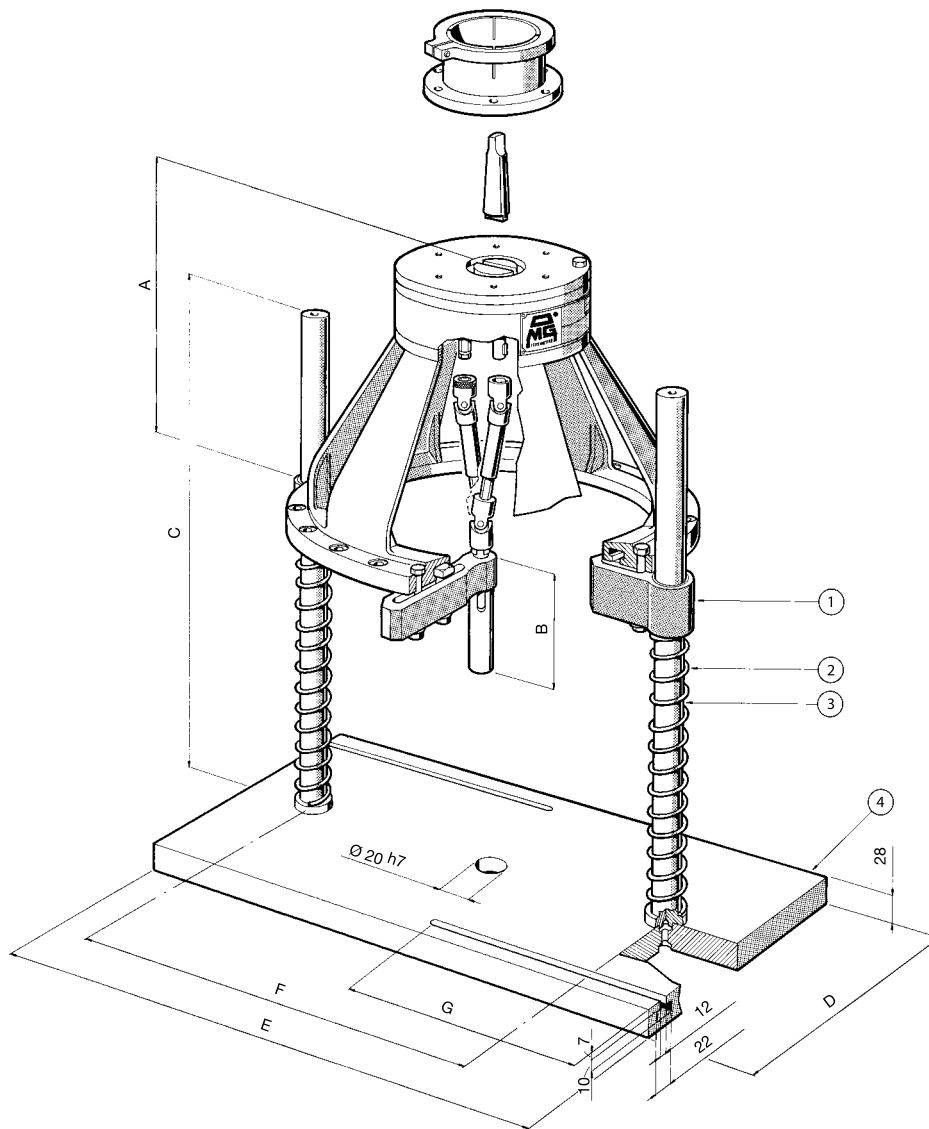


Tipi mandrini spindles type	10DM	15DM	22DM
Codice code	R10DMF	R15DMF	R22DMF
Capacità maschiatura tapping	M6	M12	M16
Corsa maschiatura Tapping stroke	40	40	40
A	127	183	192
ØB h7	12	20	28
ØC f7	20	32	40
E Interasse vite M6 distance crew M6	18,5	25	29
ØF f7	23	31	39
ØG	27	36	44
Interasse minimo center distance	23,5	32,5	40,5
Peso weight	kg 2,0	2,6	3,8

attrezzature per teste multiple

multispindle heads equipment

serie T - TS - TL - TR

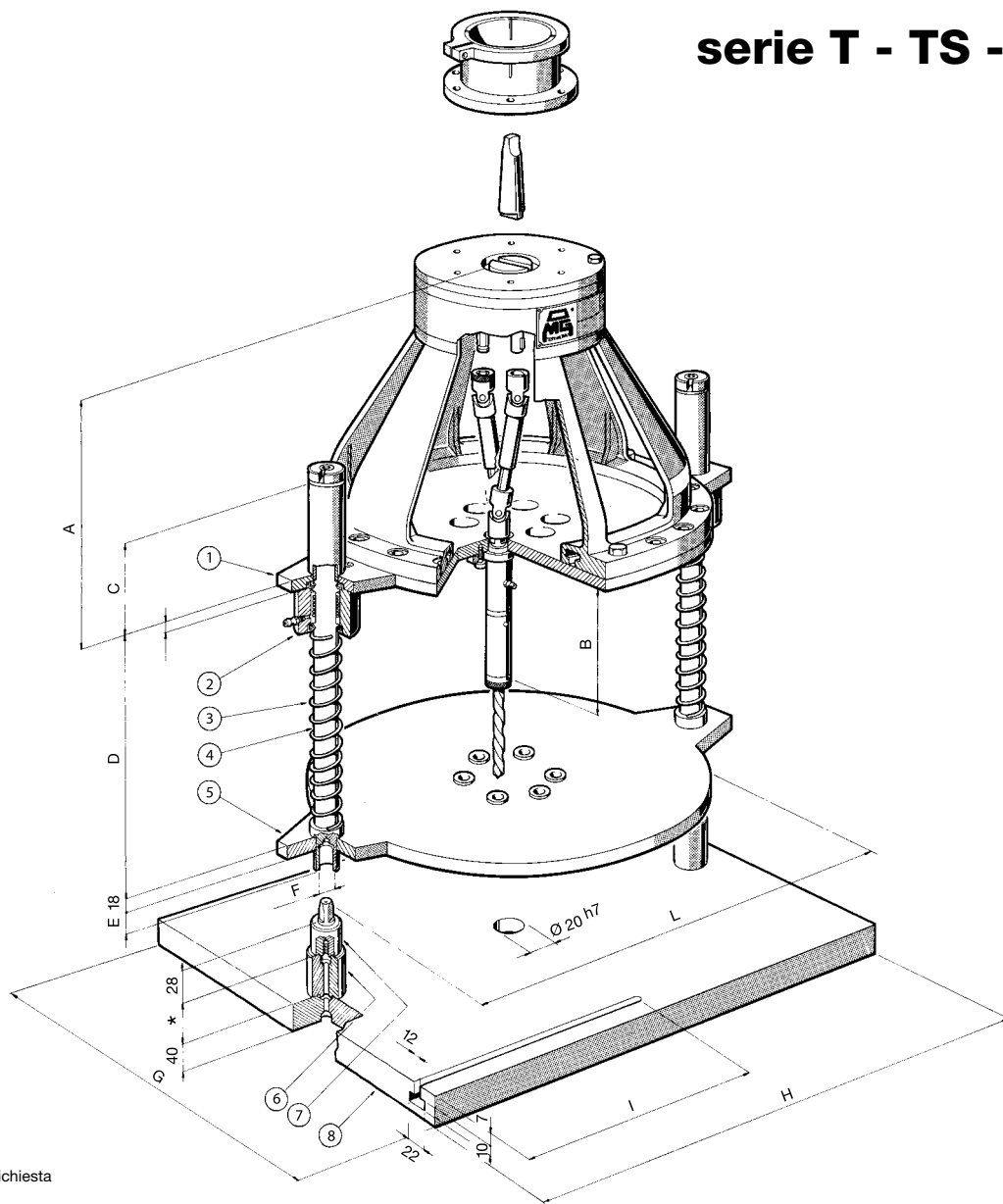


Modello testa head type	A	B		C	D	E	F	G	1 supporto di guida guide bush	2 molla spring	3 colonna column	4 base base
		DIN 55058	Pinza ER									
T4	205	91,5	76	500	250	500	280	300	076123	076126	076120	076081
T7	205	101,5	76				350					076082
T10	236	109	94,5				404					076083
T12	260	172					454					076084
TS12	283	172		650	300	650	542	350	076133	076136	076130	076088
T15	272	175					492					076085
TS15	282	175					552					076089
T18	293	185					540					076086
TS18	299	85					582					076090
T22	317	185					540					076087
TS22	317	185					582					076091
TL20/4	237	91,5	76				500					250
TL20/6	237	101,5	76	604	076093							
TL20/8	237	109	94,5	850	076094							
TL40/12	290	175		804	076094							
TL40/16	290	185		650	300	850	804	450	076133	076136	076130	076094
TL40/22	318	185					548					076095
TL60/12	290	175					629					076096
TL60/16	290	185										
TL60/22	318	185										
TR2/12	290	175										
TR2/16	290	185										
TR5/12	290	175										
TR5/16	290	185										



attrezzature per teste multiple multispindle heads equipment

serie T - TS - TL - TR



* a richiesta

Modello testa head type	A	B		C	D	E	ØPh7	G	H	I	L	1	2	3	4	5	6	7	8
		DIN 55058	Pinza ER																
T4	205	91,5	76								280	076001				076051			076081
T7	205	101,5	76	70	280	22	10	250	500	300	350	076002	076122	076126	076121	076052	-	076127	076082
T10	236	109	94,5								404	076003				076053			076083
T12	260	172									454	076004				076054			076084
TS12	283	172									542	076005				076055			076085
T15	272	175									492	076006				076056			076086
TS15	282	175		100	405	27	18	300	650	350	552	076007	076132	076136	076131	076057	-	076137	076087
T18	293	185									540	076008				076058	-		076088
TS18	299	185									582	076009				076059			076089
T22	317	185									540	076010				076060			076090
TS22	317	185									582	076011				076061			076091
TL20/4	237	91,5	76																
TL20/6	237	101,5	76	70	280	22	10	250	500	300	400	076012	076122	076126	076121	076062	-	076127	076092
TL20/8	237	109	94,5																
TL40/12	290	175																	
TL40/16	290	185									650	076013				076063			076093
TL40/22	318	185																	
TL60/12	290	175																	
TL60/16	290	185									850	076014				076064	-		076094
TL60/22	318	185		100	405	27	18	300				076132	076136	076131				076137	
TR2/12	290	175																	
TR2/16	290	185									650	076015				076065			076095
TR5/12	290	175																	
TR5/16	290	185									629	076016				076066			076096



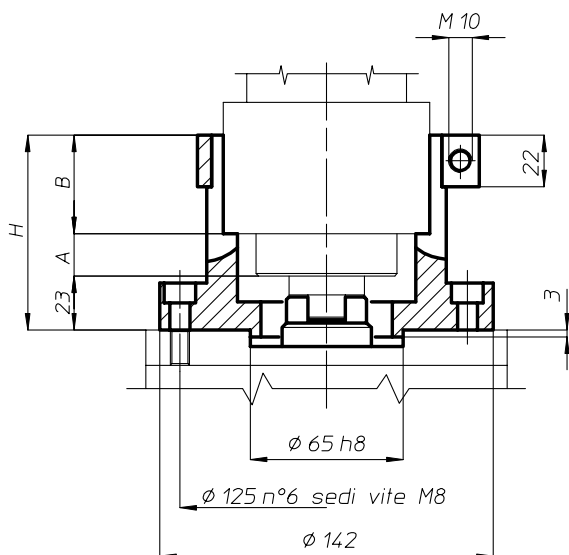
BAH
 TA.CP
 TA
 MO
 HT
 VH
 TSI/TSX
T
 MT-TC-TC3
 Accessori
 Accessories
 Appendice tecnica
 Technical supplement

Attacco Cono Morse trascinatore

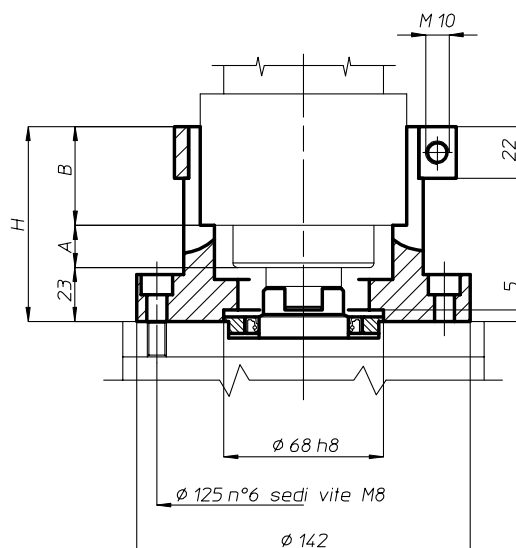
Morse Taper with driving dog

T4 - T7 - T10 - TL20...

Versione standard
Standard version

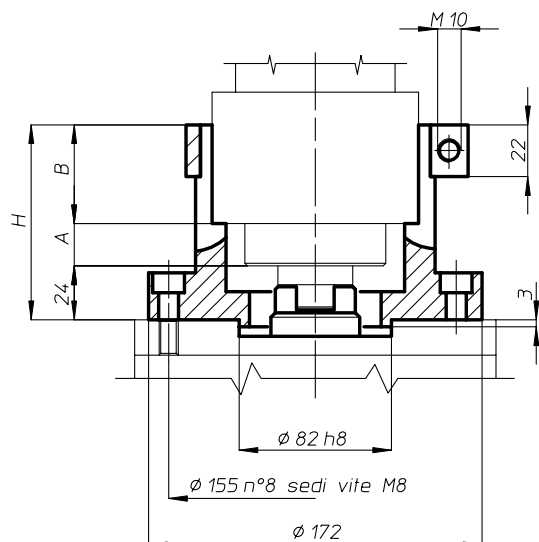


Solo versione orizzontale
For horizontal use only



T12 - T15 - T18 - T22 - TL40... - TL60... - TR2... - TR5...

Versione standard
Standard version



Solo versione orizzontale
For horizontal use only

